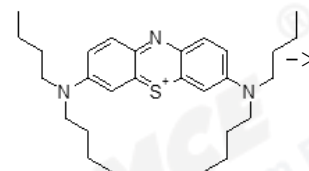
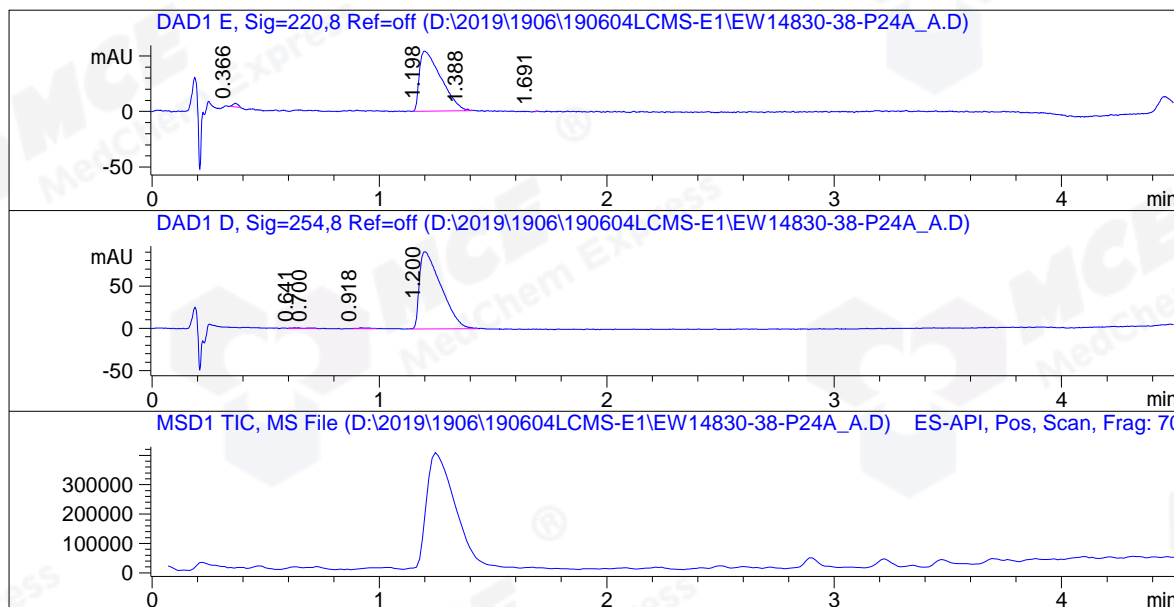


LCMS REPORT

Compound ID : 30189-85-6  
 Catalog No : HY-U00128 Batch#41834  
 Injection Date : 04-Jun-2019 11:36:23  
 Location : P1-D-02  
 Injection volume : 5.00 ul  
 Acq Method : D:\METHOD\WUXIAB60.M  
 Data Filename : D:\2019\1906\190604LCMS-E1\EW14830-38-P24A\_A.D  
 Instrument : CAS-WH-LCMS-E



Chemical Formula: C<sub>28</sub>H<sub>42</sub>N<sub>3</sub>S<sup>+</sup>  
 Exact Mass: 452.31



Report

Signal 1 : DAD1 E, Sig=220,8 Ref=off

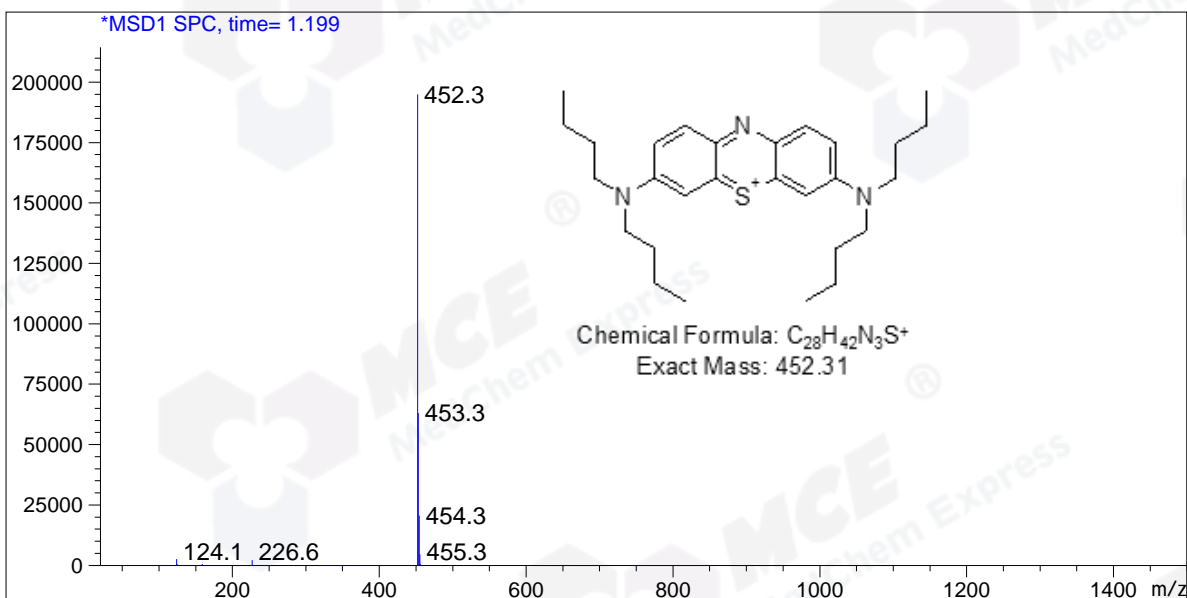
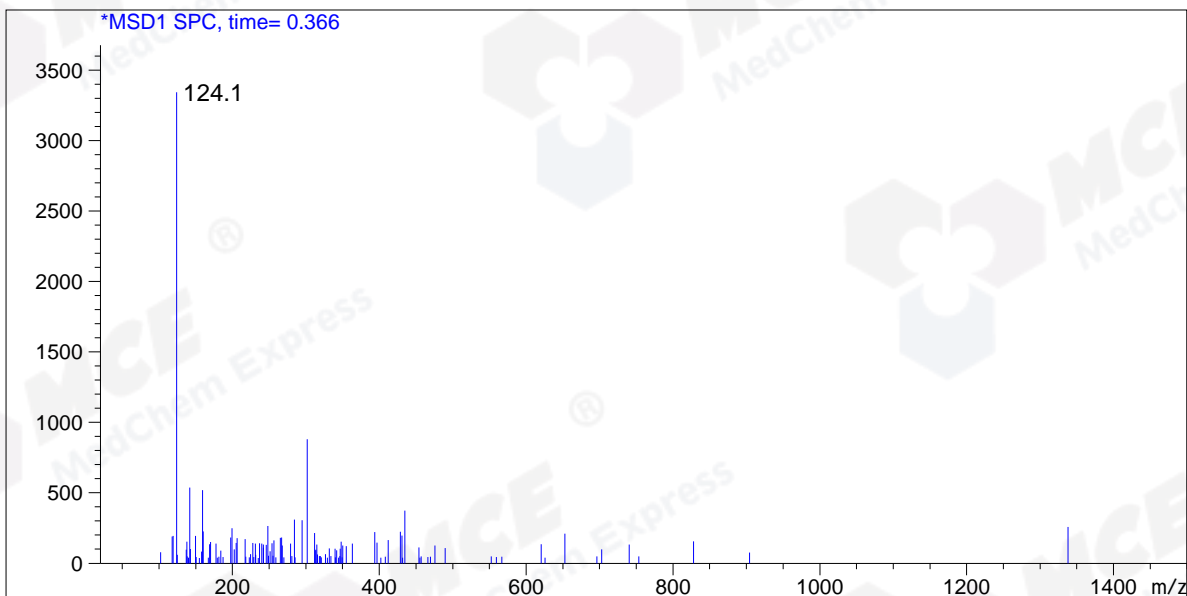
#	Meas. Ret.	Height	Width	Area	Area %
1	0.366	3.269	0.028	5.5259	1.524
2	1.198	54.245	0.109	355.2434	97.979
3	1.388	1.341	0.019	1.5552	0.429
4	1.691	0.492	0.008	0.2473	0.068

Signal 2 : DAD1 D, Sig=254,8 Ref=off

#	Meas. Ret.	Height	Width	Area	Area %
1	0.641	0.664	0.033	1.2979	0.214
2	0.700	0.675	0.031	1.2605	0.208
3	0.918	1.065	0.059	3.7528	0.618
4	1.200	90.972	0.110	600.7863	98.960

Operator: \_\_\_\_\_

Date: \_\_\_\_\_



Confidential