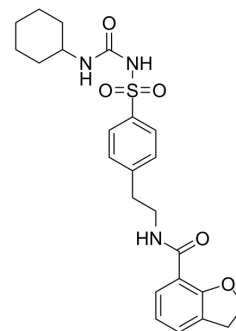


CS476

Cat. No.:	HY-U00211
CAS No.:	41177-35-9
Molecular Formula:	C ₂₄ H ₂₉ N ₃ O ₅ S
Molecular Weight:	471.57
Target:	Others
Pathway:	Others
Storage:	Please store the product under the recommended conditions in the Certificate of Analysis.



BIOLOGICAL ACTIVITY

Description	CS476 is a potent hypoglycaemic agent.
In Vivo	In normal fasting dogs, rabbits, rats and mice the maximal hypoglycaemia produced by intravenous administration of CS476 is comparable on a weight basis to that produced by Glibenclamide. Randomized Latin square experiments in dogs show that 0.03 mg/kg orally of CS476 and of Glibenclamide cause the same maximal decrease of blood glucose and that CS476 has the shorter duration of action. CS476 has no hypoglycaemic effect in totally pancreatectomized dogs nor in streptozotocin diabetic dogs and rats. The insulin releasing activity is studied in dogs after intravenous and oral administration of equipotent doses of CS476, Tolbutamide and Glibenclamide ^[1] . MCE has not independently confirmed the accuracy of these methods. They are for reference only.

REFERENCES

[1]. Jorgensen KD. The pharmacology of a new hypoglycaemic agent N-[4-(2-(2,3-dihydrobenzo(b)furano-5-carboxamido)ethyl)benzenesulfonyl]-N'-cyclohexylurea (NOVO CS 476). I. Pharmacological studies on the hypoglycaemic effect. *Acta Pharmacol Toxicol (Copenh)*. 1977 Feb;40(2):216-26.

Caution: Product has not been fully validated for medical applications. For research use only.

Tel: 609-228-6898

Fax: 609-228-5909

E-mail: tech@MedChemExpress.com

Address: 1 Deer Park Dr, Suite Q, Monmouth Junction, NJ 08852, USA