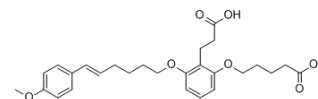


## ONO4057

<b>Cat. No.:</b>	HY-U00252
<b>CAS No.:</b>	134578-96-4
<b>Molecular Formula:</b>	C <sub>27</sub> H <sub>34</sub> O <sub>7</sub>
<b>Molecular Weight:</b>	470.55
<b>Target:</b>	Leukotriene Receptor
<b>Pathway:</b>	GPCR/G Protein
<b>Storage:</b>	Please store the product under the recommended conditions in the Certificate of Analysis.



### BIOLOGICAL ACTIVITY

<b>Description</b>	ONO4057 is a Leukotriene B <sub>4</sub> receptor antagonist, with an IC <sub>50</sub> of 0.7±0.3 μM.
<b>IC<sub>50</sub> &amp; Target</b>	LTB <sub>4</sub> 0.7 μM (IC <sub>50</sub> )
<b>In Vivo</b>	Mean animal survivals of the ONO4057-treated animals significantly prolong to 21.0±4.4 days compare with 12.0±0.6 days in control group. Histological findings from grafts taken on day 7 show that severe focal cellular infiltration is observed in both groups, but the degree of hepatocyte necrosis in ONO4057-treated animals is milder than that in control group <sup>[2]</sup> . MCE has not independently confirmed the accuracy of these methods. They are for reference only.

### PROTOCOL

<b>Animal Administration</b> <sup>[2]</sup>	Inbred male ACI (180 to 210 g) and LEW (200 to 240 g) rats are used as donors and recipients. Liver transplantation is orthotopically performed. ONO4057 dissolved in 7% NaHCO <sub>3</sub> or solvent is administered subcutaneously daily after transplantation. Animals are divided into two groups: group I (n=5), 7% NaHCO <sub>3</sub> 3 mL/kg as controls; group II (n=6), ONO4057 30 mg/kg per day <sup>[2]</sup> . MCE has not independently confirmed the accuracy of these methods. They are for reference only.
---	--

### REFERENCES

- [1]. Kishikawa K, et al. ONO-4057, a novel, orally active leukotriene B<sub>4</sub> antagonist: effects on LTB<sub>4</sub>-induced neutrophil functions. Prostaglandins. 1992 Oct;44(4):261-75.
- [2]. Tanaka M, et al. Effect of leukotriene B(4) receptor antagonist (ONO4057) on hepatic allografting in rats. Transplant Proc. 2000 Nov;32(7):2340.

---

**Caution: Product has not been fully validated for medical applications. For research use only.**

Tel: 609-228-6898

Fax: 609-228-5909

E-mail: [tech@MedChemExpress.com](mailto:tech@MedChemExpress.com)

Address: 1 Deer Park Dr, Suite Q, Monmouth Junction, NJ 08852, USA