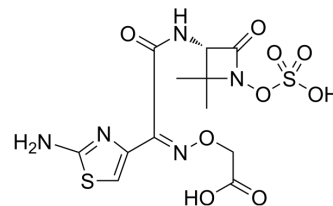


Tigemonam

Cat. No.:	HY-U00380
CAS No.:	102507-71-1
Molecular Formula:	C ₁₂ H ₁₅ N ₅ O ₉ S ₂
Molecular Weight:	437.41
Target:	Bacterial; Antibiotic
Pathway:	Anti-infection
Storage:	Please store the product under the recommended conditions in the Certificate of Analysis.



BIOLOGICAL ACTIVITY

Description	Tigemonam is a monobactam, with potent activity against Gram-negative aerobic bacterial pathogens.
In Vitro	Tigemonam (0.25 mg/L) inhibits 90% of <i>Escherichia coli</i> , <i>Klebsiella</i> spp., <i>Proteus</i> spp., <i>Salmonella</i> spp., <i>Haemophilus influenzae</i> and <i>Branhamella catarrhalis</i> tested. The MIC ₉₀ for <i>Enterobacter</i> spp. is 16 mg/L and for <i>Citrobacter</i> 4 mg/L. <i>Pseudomonas aeruginosa</i> is resistant to tigemonam but susceptible to aztreonam. Tigemonam shows minimal inoculum dependence, between 10 ² and 10 ⁶ cfu per spot ^[1] . MCE has not independently confirmed the accuracy of these methods. They are for reference only.
In Vivo	Tigemonam shows potent activities against <i>Escherichia coli</i> SC 8294, <i>E. coli</i> SC 12199, <i>Salmonella schottmulleri</i> SC 3850, <i>Proteus mirabilis</i> SC 9575, <i>Providencia rettgeri</i> SC 8217, <i>Klebsiella pneumoniae</i> SC 12216, <i>Serratia marcescens</i> SC 9782, <i>Enterobacter cloacae</i> SC 11078, <i>Haemophilus influenzae</i> SC 10556, with ED ₅₀ of 1.4 mg/kg, 1.5 mg/kg, 0.7 mg/kg, 0.3 mg/kg, 0.2 mg/kg, 0.9 mg/kg, 0.5 mg/kg, 3.9 mg/kg and 1.8 mg/kg in mice ^[2] . MCE has not independently confirmed the accuracy of these methods. They are for reference only.

REFERENCES

- [1]. Rylander M, et al. Comparative in-vitro activity of tigemonam, a new monobactam. *J Antimicrob Chemother.* 1988 Sep;22(3):307-13.
- [2]. Clark JM, et al. In vivo evaluation of tigemonam, a novel oral monobactam. *Antimicrob Agents Chemother.* 1987 Feb;31(2):226-9.

Caution: Product has not been fully validated for medical applications. For research use only.

Tel: 609-228-6898

Fax: 609-228-5909

E-mail: tech@MedChemExpress.com

Address: 1 Deer Park Dr, Suite Q, Monmouth Junction, NJ 08852, USA