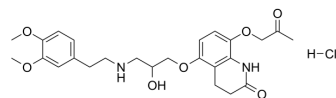


Bometolol Hydrochloride

Cat. No.:	HY-U00386
CAS No.:	65023-16-7
Molecular Formula:	C ₂₅ H ₃₃ ClN ₂ O ₇
Molecular Weight:	508.99
Target:	Adrenergic Receptor
Pathway:	GPCR/G Protein; Neuronal Signaling
Storage:	Please store the product under the recommended conditions in the Certificate of Analysis.



BIOLOGICAL ACTIVITY

Description	Bometolol Hydrochloride is a beta-adrenergic blocking agent, used for the research of cardiovascular disease.
IC₅₀ & Target	Beta-adrenergic receptor ^[1]
In Vivo	Bometolol (10-30 mg/kg, p.o.) lowers the blood pressure dose-dependently in spontaneously hypertensive rats, deoxycorticosterone and salt hypertensive rats and two kidney, one clip hypertensive rats. In subchronic study, Bometolol (10-30 mg/kg, or 100-300 mg/kg, p.o.) dose-dependently decreases heart rate, plasma renin activity, heart and kidney weight and incidence of vascular lesion, but shows no antihypertensive effects in all the hypertensive rats ^[1] . MCE has not independently confirmed the accuracy of these methods. They are for reference only.

PROTOCOL

Animal Administration ^[1]	Rats ^[1] In the acute experiments, normal female Donryu strain (DON, 14-15 weeks, 250-270 g), and SHR (17-18 weeks, 180-200 g), DOC (7-9 weeks, 180-210 g), and CLIP (7-9 weeks, 180-210 g) hypertensive rats are used. Bometolol hydrochloride is dissolved in H ₂ O and 0.01% Tween 80 solution at a volume of 5 mL/kg body weight for the acute and subchronic studies, respectively. The doses are in terms of the free base. The solution is administered orally by a gastric tube. In the acute experiment, H ₂ O (5 mL/kg) is given to the control groups. In the subchronic experiment, the drug is administered once a day for 5 weeks, 5 days per week, and Tween 80 solution (5 mL/kg) is given to the control groups ^[1] . MCE has not independently confirmed the accuracy of these methods. They are for reference only.
---	--

REFERENCES

[1]. Watanabe TX, et al. Acute and subchronic effects of bometolol on blood pressure in hypertensive rats. J Pharmacobiodyn. 1981 Jul;4(7):505-12.

Caution: Product has not been fully validated for medical applications. For research use only.

Tel: 609-228-6898

Fax: 609-228-5909

E-mail: tech@MedChemExpress.com

Address: 1 Deer Park Dr, Suite Q, Monmouth Junction, NJ 08852, USA