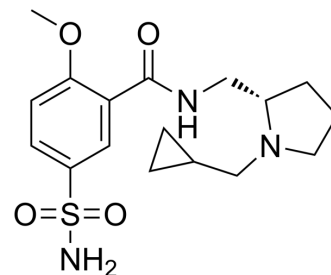


## Cipropride (S enantiomer)

Cat. No.:	HY-U00403
CAS No.:	66183-70-8
Molecular Formula:	C <sub>17</sub> H <sub>25</sub> N <sub>3</sub> O <sub>4</sub> S
Molecular Weight:	367.46
Target:	Others
Pathway:	Others
Storage:	Please store the product under the recommended conditions in the Certificate of Analysis.



### BIOLOGICAL ACTIVITY

#### Description

Cipropride (S enantiomer) is the S enantiomer of cipropride; cipropride is an antiemetic agent.

**Caution: Product has not been fully validated for medical applications. For research use only.**

Tel: 609-228-6898

Fax: 609-228-5909

E-mail: tech@MedChemExpress.com

Address: 1 Deer Park Dr, Suite Q, Monmouth Junction, NJ 08852, USA