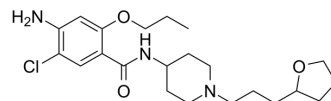


Benzamide Derivative 1

Cat. No.:	HY-U00415
CAS No.:	108226-05-7
Molecular Formula:	C ₂₂ H ₃₄ ClN ₃ O ₃
Molecular Weight:	423.98
Target:	Dopamine Receptor; mAChR
Pathway:	GPCR/G Protein; Neuronal Signaling
Storage:	Please store the product under the recommended conditions in the Certificate of Analysis.



BIOLOGICAL ACTIVITY

Description	Benzamide Derivative 1 is a benzamide derivative from patent EP0213775A1, compound 18. Benzamide Derivative 1 may be useful in treatment of gastrointestinal disorders.
IC₅₀ & Target	Dopamine, mACh receptor ^[1]
In Vitro	Substituted benzamides have been shown to possess a number of pharmacological properties most of which are related to their ability to antagonize the central and peripheral effects of dopamine and/or facilitate the release of acetylcholine on to muscarinic receptors in the gastrointestinal smooth muscle. This has led to their successful clinical use as antiemetic and in the treatment of a wide range of gastrointestinal disorders of somatic, psychosomatic and iatrogenic origin ^[1] . MCE has not independently confirmed the accuracy of these methods. They are for reference only.

REFERENCES

[1]. Noverola V, et al. Preparation and formulation of N-heterocycl-yl-substituted benzamides useful in treatment of gastrointestinal disorders. EP0213775A1.

Caution: Product has not been fully validated for medical applications. For research use only.

Tel: 609-228-6898

Fax: 609-228-5909

E-mail: tech@MedChemExpress.com

Address: 1 Deer Park Dr, Suite Q, Monmouth Junction, NJ 08852, USA