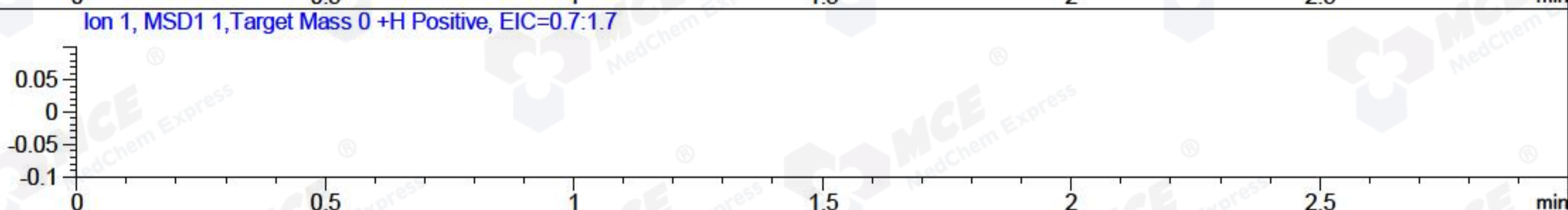
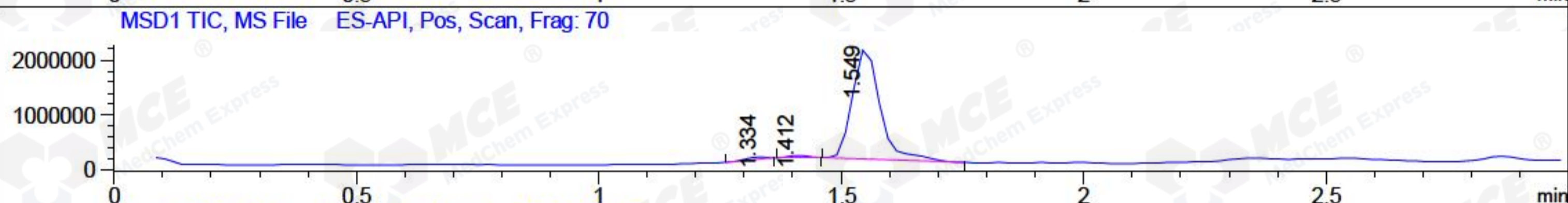
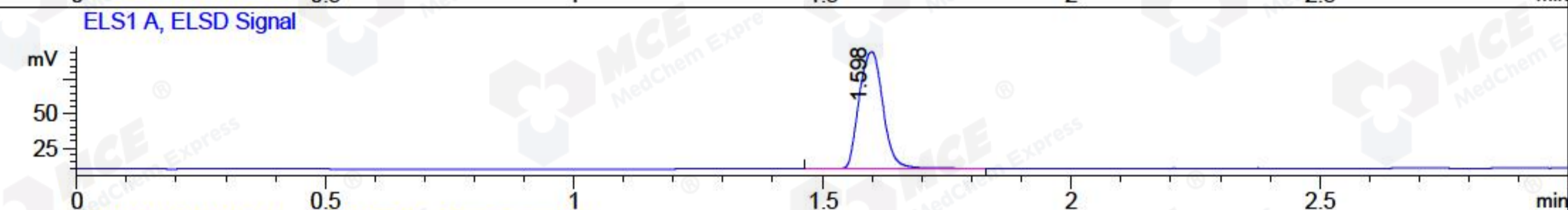
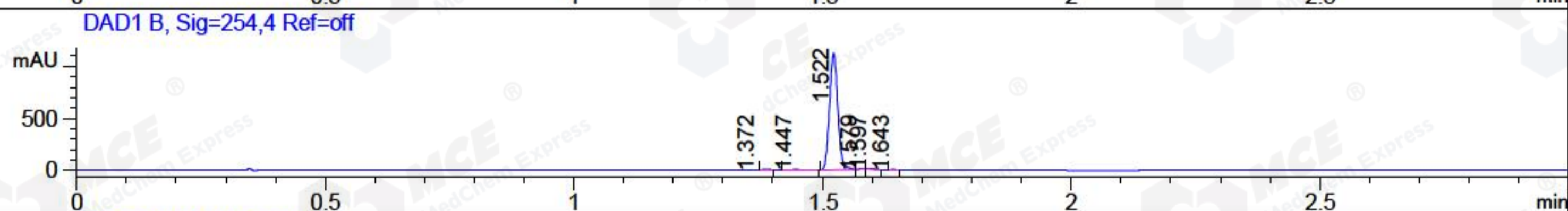
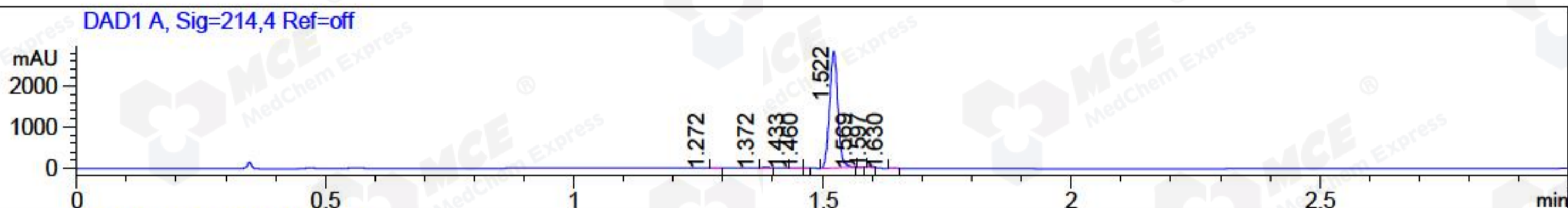


File ..ata\2018\20180806\20180806\LYF5633-036-P1.D Tgt Mass (CHM):
Injection Date : 6 Aug 18 5:29 pm +0800 Seq. Line : 103
Sample Name : LYF5633-036-P1 Location : P2-C-01
Acq. Operator : SYSTEM Inj : 1
Spec. Reported : MS Integration Inj Volume : 2 ul
Acq. Method : D:\LCMS03\Data\2018\20180806\20180806\1-POS-3MIN.M
Analysis Method : D:\LCMS03\Data\2018\20180806\20180806\1-POS-3MIN.M
Catalog No : HY-U00417 Batch#31980
Method Info : Mobile Phase: A: water(0.01%TFA) B:ACN(0.01%TFA)
Gradient: 5% to 95%B within 1.3 min
Flow Rate :1.8ml/min
Column :SunFire C18, 4.6*50mm,3.5um A-RP-186
Oven Temperature : 45C



Integration Results for DAD1 A, Sig=214,4 Ref=off

RetTim	Width	Area	Height	Area%	MS (+)
1.27	0.02	8.33	1.50	0.25	315
1.37	0.02	19.76	0.06	0.59	413
1.43	0.01	8.01	1.15	0.24	413
1.46	0.01	1.36	0.22	0.04	315
1.52	0.02	3264.00	2812.35	98.08	431
1.57	0.01	4.53	1.89	0.14	431
1.60	0.01	14.73	20.95	0.44	431
1.63	0.01	7.18	1.68	0.22	445

Integration Results for DAD1 B, Sig=254,4 Ref=off

RetTim	Width	Area	Height	Area%	MS (+)
1.37	0.02	6.25	0.32	0.47	413
1.45	0.02	8.03	4.82	0.61	413
1.52	0.02	1296.12	1116.54	98.01	431
1.58	0.01	1.32	2.21	0.10	431
1.60	0.01	7.57	8.63	0.57	431
1.64	0.02	3.20	3.35	0.24	445

Integration Results for ELS1 A, ELSD Signal

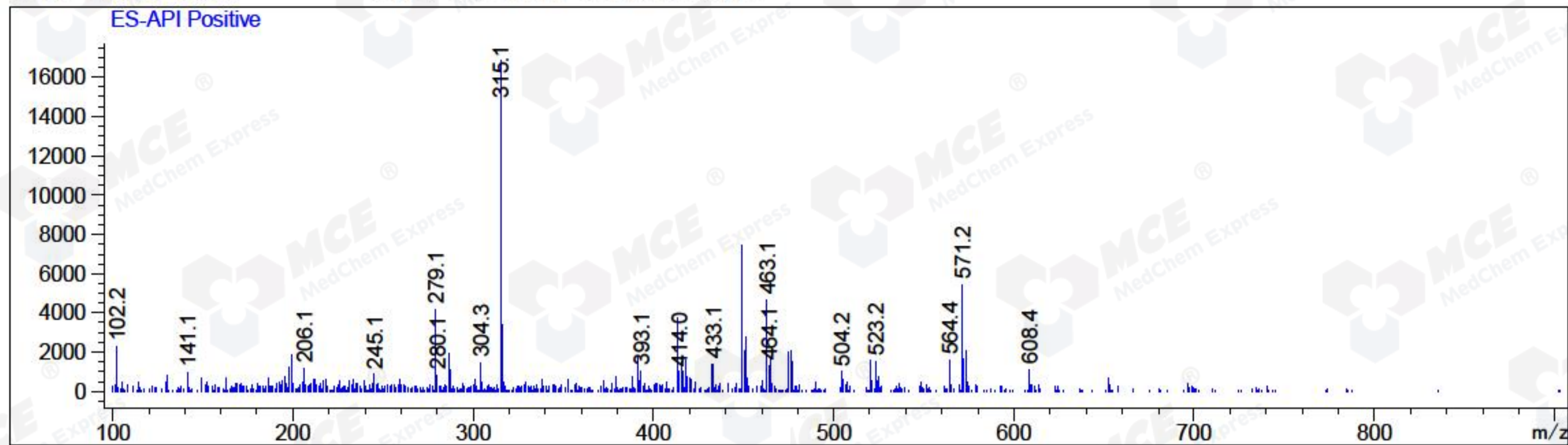
RetTim	Width	Area	Height	Area%	MS (+)
1.60	0.05	283.58	85.42	100.00	431

Integration Results for MSD1 TIC, MS File

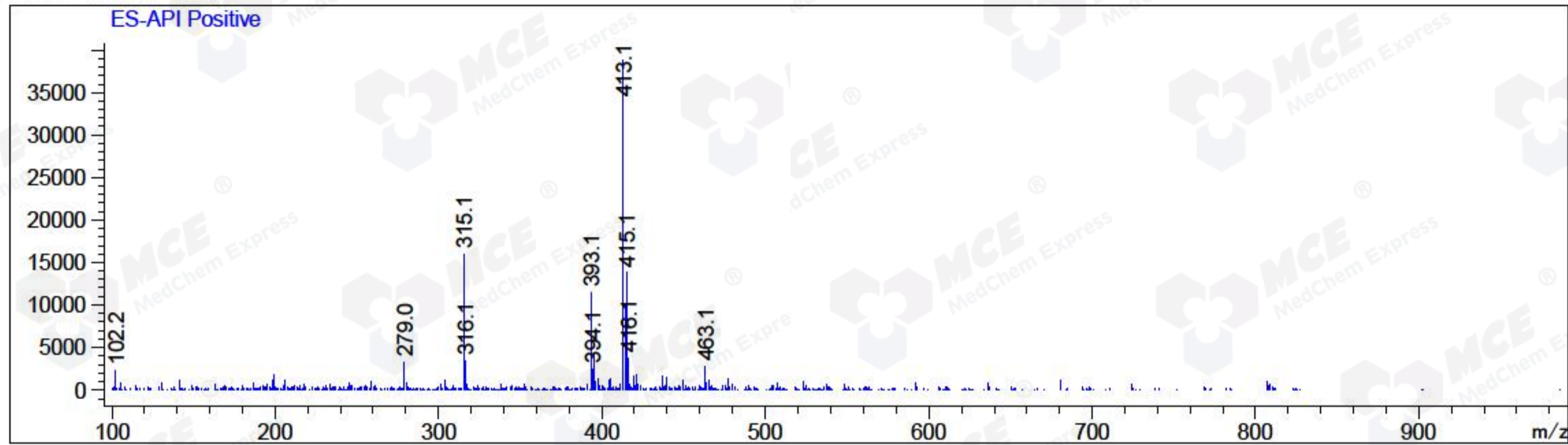
RetTim	Width	Area	Height	Area%	MS (+)
1.33	0.06	121890.24	35757.23	1.47	315
1.41	0.05	134391.17	48275.62	1.63	413
1.55	0.06	8010484.00	2013163.75	96.90	431

Ret. Time: 1.33

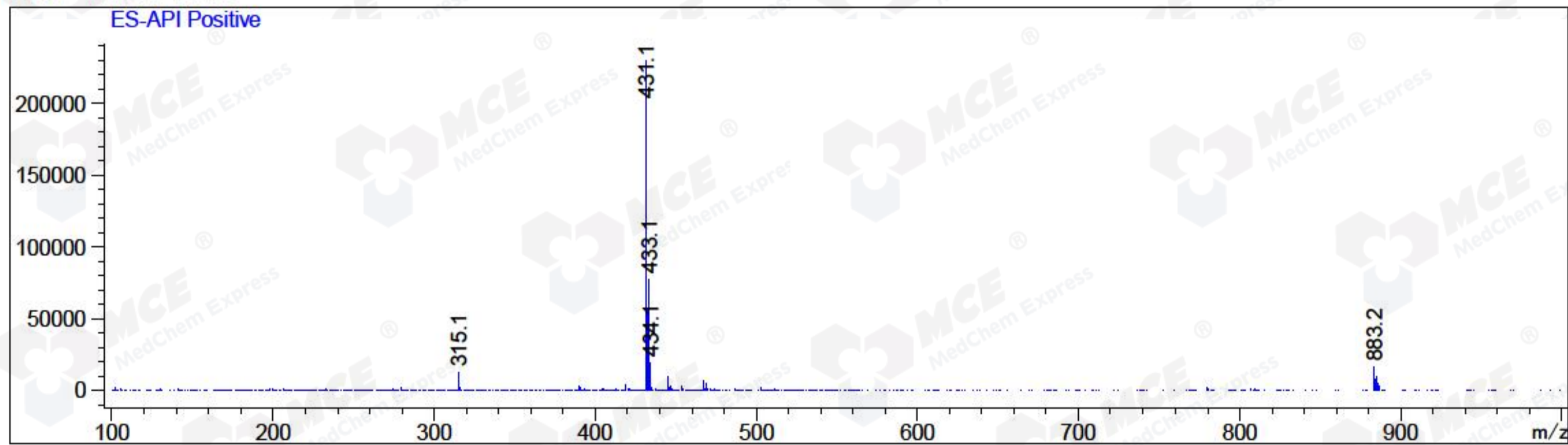
<<<< POSITIVE SPECTRA >>>>



Ret. Time: 1.41



Ret. Time: 1.55



*** End of Report ***