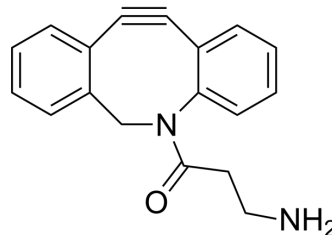


DBCO-amine (GMP)

Cat. No.:	HY-W000423G
CAS No.:	1255942-06-3
Molecular Formula:	C ₁₈ H ₁₆ N ₂ O
Molecular Weight:	276.33
Target:	ADC Linker
Pathway:	Antibody-drug Conjugate/ADC Related
Storage:	Please store the product under the recommended conditions in the Certificate of Analysis.



BIOLOGICAL ACTIVITY

Description

DBCO-amine GMP is a GMP grade DBCO-amine (HY-W000423). DBCO-amine is a cleavable ADC linker used in the synthesis of antibody-drug conjugates (ADCs)^[1]. DBCO-amine is a click chemistry reagent, it contains a DBCO group that can undergo strain-promoted alkyne-azide cycloaddition (SPAAC) with molecules containing Azide groups.

REFERENCES

[1]. Ermira Pazolli, et al. Splicing modulator antibody-drug conjugates and methods of use. WO2019232449A1.

Caution: Product has not been fully validated for medical applications. For research use only.

Tel: 609-228-6898

Fax: 609-228-5909

E-mail: tech@MedChemExpress.com

Address: 1 Deer Park Dr, Suite Q, Monmouth Junction, NJ 08852, USA