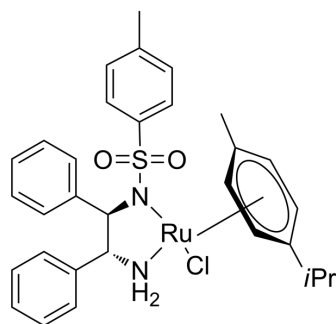


RuCl(p-cymene)[(R,R)-Ts-DPEN]

Cat. No.:	HY-W001069
CAS No.:	192139-92-7
Molecular Formula:	C ₃₁ H ₃₅ ClN ₂ O ₂ RuS
Molecular Weight:	636.21
Target:	Biochemical Assay Reagents
Pathway:	Others
Storage:	-20°C, stored under nitrogen * In solvent : -80°C, 6 months; -20°C, 1 month (stored under nitrogen)



BIOLOGICAL ACTIVITY

Description

RuCl(p-cymene)[(R,R)-Ts-DPEN] is a biochemical reagent that can be used as a biological material or organic compound for life science related research.

Caution: Product has not been fully validated for medical applications. For research use only.

Tel: 609-228-6898

Fax: 609-228-5909

E-mail: tech@MedChemExpress.com

Address: 1 Deer Park Dr, Suite Q, Monmouth Junction, NJ 08852, USA