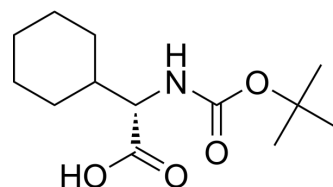


(S)-2-((tert-Butoxycarbonyl)amino)-2-cyclohexylacetic acid

Cat. No.:	HY-W002410
CAS No.:	109183-71-3
Molecular Formula:	C ₁₃ H ₂₃ NO ₄
Molecular Weight:	257.33
Target:	Amino Acid Derivatives
Pathway:	Others
Storage:	Powder -20°C 3 years 4°C 2 years In solvent -80°C 6 months -20°C 1 month



SOLVENT & SOLUBILITY

In Vitro	DMSO : 100 mg/mL (388.61 mM; Need ultrasonic)					
	Preparing Stock Solutions	<div><div>Solvent</div><div>Concentration</div></div>	Mass	1 mg	5 mg	10 mg
		1 mM		3.8861 mL	19.4303 mL	38.8606 mL
		5 mM		0.7772 mL	3.8861 mL	7.7721 mL
		10 mM		0.3886 mL	1.9430 mL	3.8861 mL
Please refer to the solubility information to select the appropriate solvent.						
In Vivo	1. Add each solvent one by one: 10% DMSO >> 40% PEG300 >> 5% Tween-80 >> 45% saline Solubility: ≥ 2.5 mg/mL (9.72 mM); Clear solution					
	2. Add each solvent one by one: 10% DMSO >> 90% (20% SBE-β-CD in saline) Solubility: ≥ 2.5 mg/mL (9.72 mM); Clear solution					
	3. Add each solvent one by one: 10% DMSO >> 90% corn oil Solubility: ≥ 2.5 mg/mL (9.72 mM); Clear solution					

BIOLOGICAL ACTIVITY

Description	(S)-2-((tert-Butoxycarbonyl)amino)-2-cyclohexylacetic acid is a Glycine (HY-Y0966) derivative ^[1] .
In Vitro	Amino acids and amino acid derivatives have been commercially used as ergogenic supplements. They influence the secretion of anabolic hormones, supply of fuel during exercise, mental performance during stress related tasks and prevent exercise induced muscle damage. They are recognized to be beneficial as ergogenic dietary substances ^[1] . MCE has not independently confirmed the accuracy of these methods. They are for reference only.

REFERENCES

[1]. Luckose F, et al. Effects of amino acid derivatives on physical, mental, and physiological activities. Crit Rev Food Sci Nutr. 2015;55(13):1793-1144.

Caution: Product has not been fully validated for medical applications. For research use only.

Tel: 609-228-6898

Fax: 609-228-5909

E-mail: tech@MedChemExpress.com

Address: 1 Deer Park Dr, Suite Q, Monmouth Junction, NJ 08852, USA