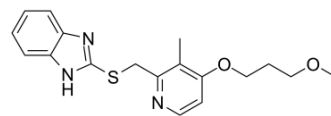


## Rabeprazole Sulfide

Cat. No.:	HY-W003467		
CAS No.:	117977-21-6		
Molecular Formula:	C <sub>18</sub> H <sub>21</sub> N <sub>3</sub> O <sub>2</sub> S		
Molecular Weight:	343.44		
Target:	Proton Pump; Bacterial		
Pathway:	Membrane Transporter/Ion Channel; Anti-infection		
Storage:	Powder	-20°C	3 years
		4°C	2 years
	In solvent	-80°C	6 months
		-20°C	1 month



### BIOLOGICAL ACTIVITY

#### Description

Rabeprazole Sulfide is an active metabolite of Rabeprazole. Rabeprazole is a proton pump inhibitor that suppresses gastric acid secretion through an interaction with (H<sup>+</sup>/K<sup>+</sup>)-ATPase in gastric parietal cells. Rabeprazole markedly inhibits the motility of *H. pylori*. Rabeprazole has the potential for various peptic diseases treatment<sup>[1][2]</sup>.

### REFERENCES

[1]. Uno T, et al. Determination of rabeprazole and its active metabolite, rabeprazole thioether in human plasma by column-switching high-performance liquid chromatography and its application to pharmacokinetic study. J Chromatogr B Analyt Technol Biomed Life Sci. 2005 Sep 25;824(1-2):238-43.

[2]. Tsutsui N, et al. A novel action of the proton pump inhibitor rabeprazole and its thioether derivative against the motility of Helicobacter pylori. Antimicrob Agents Chemother. 2000 Nov;44(11):3069-73.

**Caution: Product has not been fully validated for medical applications. For research use only.**

Tel: 609-228-6898

Fax: 609-228-5909

E-mail: tech@MedChemExpress.com

Address: 1 Deer Park Dr, Suite Q, Monmouth Junction, NJ 08852, USA