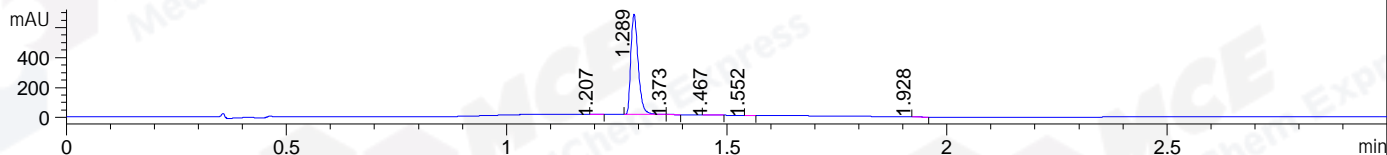
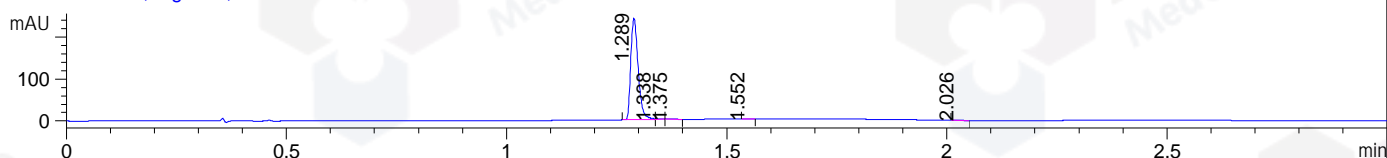


File ..Data\20180125\20180125-1\LJ2018-0124-0005.D Tgt Mass (CHM):
Injection Date : 25 Jan 18 1:38 pm +0800 Seq. Line : 12
Sample Name : LJ2018-0124-0005 Location : P1-E-01
Acq. Operator : SYSTEM Inj : 1
Spec. Reported : MS Integration Inj Volume : 1 ul
Acq. Method : D:\LCMS03\Data\20180125\20180125-1\1-POS-3MIN.M
Analysis Method : D:\LCMS03\Data\20180125\20180125-1\1-POS-3MIN.M
Catalog No : HY-W003467
Method Info : Mobile Phase: A: water(0.01%TFA) B:ACN(0.01%TFA)
Gradient: 5% to 95%B within 1.3 min
Flow Rate :1.8ml/min
Column :SunFire C18, 4.6*50mm,3.5um A-RP-186
Oven Temperature : 45C

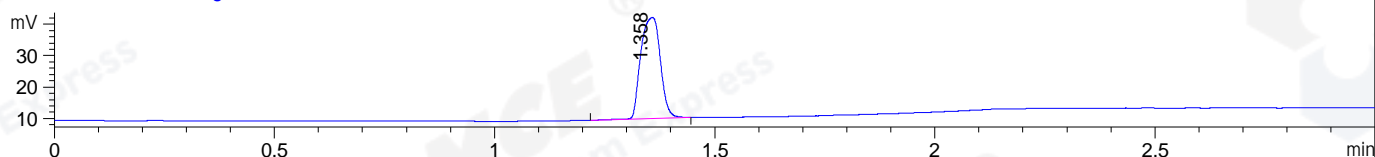
DAD1 A, Sig=214,4 Ref=off



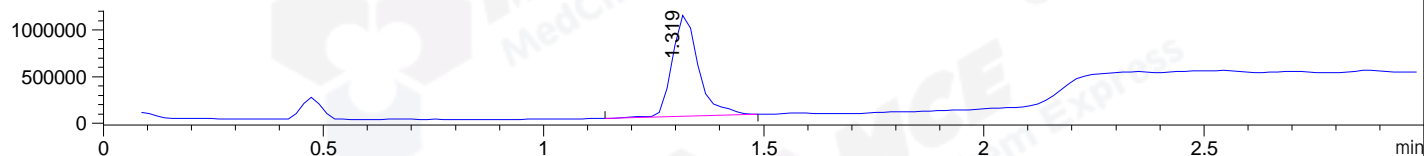
DAD1 B, Sig=254,4 Ref=off



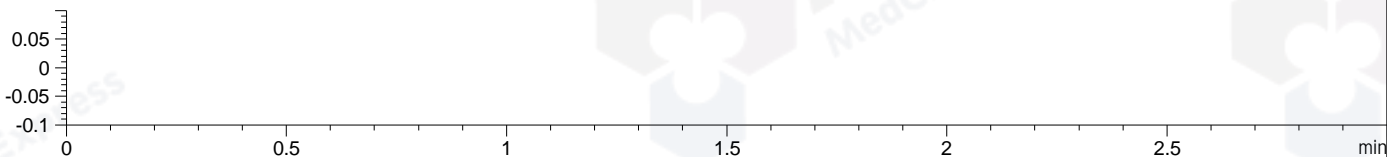
ELS1 A, ELSD Signal



MSD1 TIC, MS File ES-API, Pos, Scan, Frag: 70



Ion 1, MSD1 1, Target Mass 0 +H Positive, EIC=0.7:1.7



Integration Results for DAD1 A, Sig=214,4 Ref=off

RetTim	Width	Area	Height	Area%	MS (+)
1.21	0.02	0.55	0.42	0.07	221
1.29	0.02	779.57	666.94	99.26	344
1.37	0.02	1.16	1.25	0.15	344
1.47	0.02	3.09	2.84	0.39	344
1.55	0.01	0.41	0.50	0.05	145
1.93	0.02	0.55	0.43	0.07	145

Integration Results for DAD1 B, Sig=254,4 Ref=off

RetTim	Width	Area	Height	Area%	MS (+)
1.29	0.02	280.77	241.25	99.34	344
1.34	0.01	0.68	1.31	0.24	344
1.37	0.02	0.66	0.65	0.23	344
1.55	0.01	0.17	0.19	0.06	145
2.03	0.02	0.35	0.31	0.13	145

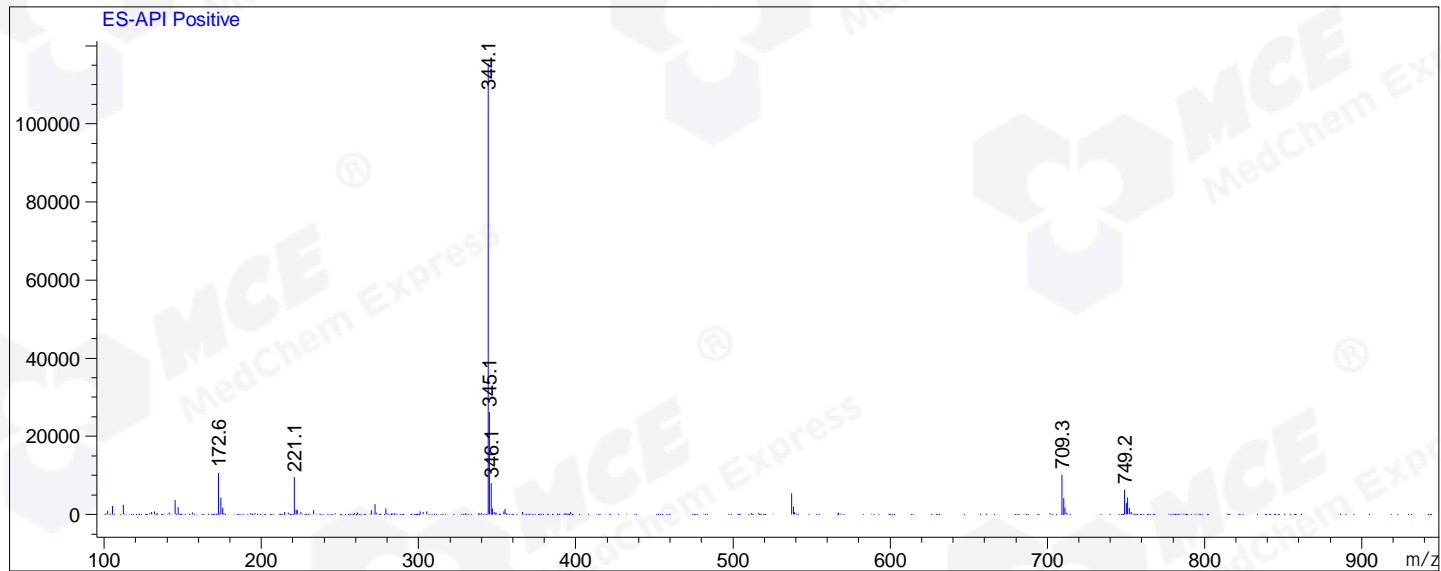
Integration Results for MSD1 TIC, MS File

1.32 0.06 4506471.50 1088035.88 100.00 344

RetTim	Width	Area	Height	Area%	MS (+)
--------	-------	------	--------	-------	--------

Ret. Time: 1.32

<<<< POSITIVE SPECTRA >>>>



*** End of Report ***