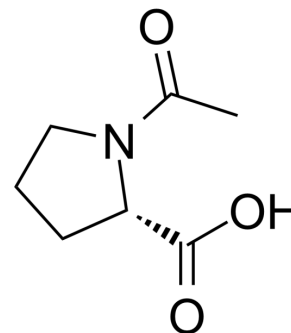


N-Acetyl-L-proline

| | |
|---------------------------|---|
| Cat. No.: | HY-W004114 |
| CAS No.: | 68-95-1 |
| Molecular Formula: | C ₇ H ₁₁ NO ₃ |
| Molecular Weight: | 157.17 |
| Target: | Endogenous Metabolite; Amino Acid Derivatives |
| Pathway: | Metabolic Enzyme/Protease; Others |
| Storage: | Please store the product under the recommended conditions in the Certificate of Analysis. |



BIOLOGICAL ACTIVITY

| | |
|-------------------------------------|---|
| Description | N-Acetyl-L-proline is a proline derivative. |
| IC₅₀ & Target | Human Endogenous Metabolite |

Caution: Product has not been fully validated for medical applications. For research use only.

Tel: 609-228-6898

Fax: 609-228-5909

E-mail: tech@MedChemExpress.com

Address: 1 Deer Park Dr, Suite Q, Monmouth Junction, NJ 08852, USA