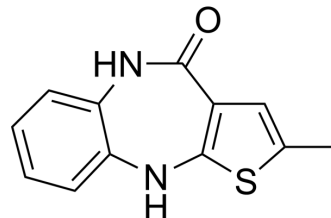


Olanzapine-lactam

Cat. No.:	HY-W004412
CAS No.:	221176-49-4
Molecular Formula:	C ₁₂ H ₁₀ N ₂ OS
Molecular Weight:	230.29
Target:	Others
Pathway:	Others
Storage:	Please store the product under the recommended conditions in the Certificate of Analysis.



BIOLOGICAL ACTIVITY

Description

Olanzapine-lactam (LY301664) is a metabolite of Olanzapine (HY-14541)^[1].

REFERENCES

[1]. Murphy A T, et al. Characterization of olanzapine (LY170053) in human liver slices by liquid chromatography/tandem mass spectrometry[J]. Journal of mass spectrometry, 1998, 33(12): 1237-1245.

Caution: Product has not been fully validated for medical applications. For research use only.

Tel: 609-228-6898

Fax: 609-228-5909

E-mail: tech@MedChemExpress.com

Address: 1 Deer Park Dr, Suite Q, Monmouth Junction, NJ 08852, USA