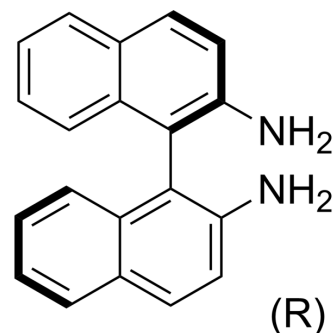


(R)-[1,1'-Binaphthalene]-2,2'-diamine

Cat. No.:	HY-W007978
CAS No.:	18741-85-0
Molecular Formula:	C ₂₀ H ₁₆ N ₂
Molecular Weight:	284.35
Target:	Others
Pathway:	Others
Storage:	4°C, protect from light, stored under nitrogen * In solvent : -80°C, 6 months; -20°C, 1 month (protect from light, stored under nitrogen)



BIOLOGICAL ACTIVITY

Description

(R)-[1,1'-Binaphthalene]-2,2'-diamine is the isomer of (S)-[1,1'-Binaphthalene]-2,2'-diamine (HY-W007978A), and can be used as an experimental control. (S)-[1,1'-Binaphthalene]-2,2'-diamine is a biochemical reagent that can be used as a biological material or organic compound for life science related research.

REFERENCES

- [1]. Singh AV, et al. PR-924, a selective inhibitor of the immunoproteasome subunit LMP-7, blocks multiple myeloma cell growth both in vitro and in vivo. Br J Haematol. 2011 Jan;152(2):155-63.
- [2]. Parlati F, et al. Carfilzomib can induce tumor cell death through selective inhibition of the chymotrypsin-like activity of the proteasome. Blood. 2009 Oct 15;114(16):3439-47.

Caution: Product has not been fully validated for medical applications. For research use only.

Tel: 609-228-6898

Fax: 609-228-5909

E-mail: tech@MedChemExpress.com

Address: 1 Deer Park Dr, Suite Q, Monmouth Junction, NJ 08852, USA