

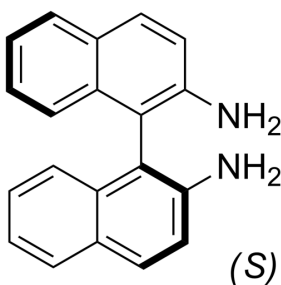
(S)-[1,1'-Binaphthalene]-2,2'-diamine

Cat. No.: HY-W007978A
CAS No.: 18531-95-8
Batch No.: 61852
Chemical Name: [1,1'-Binaphthalene]-2,2'-diamine, (1S)-

PHYSICAL AND CHEMICAL PROPERTIES

Molecular Formula: C₂₀H₁₆N₂
Molecular Weight: 284.35
Storage: 4°C, protect from light, stored under nitrogen
* In solvent : -80°C, 6 months; -20°C, 1 month (protect from light, stored under nitrogen)

Chemical Structure:



ANALYTICAL DATA

Appearance: White to off-white (Solid)
¹H NMR Spectrum: Consistent with structure
Purity (HPLC): 99.13%
Conclusion: The product has been tested and complies with the given specifications.

Caution: Product has not been fully validated for medical applications. For research use only.

Tel: 609-228-6898

Fax: 609-228-5909

E-mail: tech@MedChemExpress.com

Address: 1 Deer Park Dr, Suite Q, Monmouth Junction, NJ 08852, USA