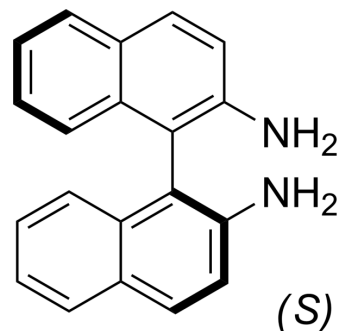


(S)-[1,1'-Binaphthalene]-2,2'-diamine

Cat. No.:	HY-W007978A
CAS No.:	18531-95-8
Molecular Formula:	C ₂₀ H ₁₆ N ₂
Molecular Weight:	284.35
Target:	Biochemical Assay Reagents
Pathway:	Others
Storage:	4°C, protect from light, stored under nitrogen * In solvent : -80°C, 6 months; -20°C, 1 month (protect from light, stored under nitrogen)



BIOLOGICAL ACTIVITY

Description

(S)-[1,1'-Binaphthalene]-2,2'-diamine is a biochemical reagent that can be used as a biological material or organic compound for life science related research.

Caution: Product has not been fully validated for medical applications. For research use only.

Tel: 609-228-6898

Fax: 609-228-5909

E-mail: tech@MedChemExpress.com

Address: 1 Deer Park Dr, Suite Q, Monmouth Junction, NJ 08852, USA