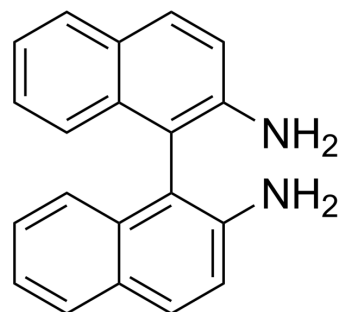


## 1,1'-Binaphthyl-2,2'-diamine

Cat. No.:	HY-W007978B
CAS No.:	4488-22-6
Molecular Formula:	C <sub>20</sub> H <sub>16</sub> N <sub>2</sub>
Molecular Weight:	284.35
Target:	Others
Pathway:	Others
Storage:	4°C, protect from light, stored under nitrogen * In solvent : -80°C, 6 months; -20°C, 1 month (protect from light, stored under nitrogen)



### BIOLOGICAL ACTIVITY

#### Description

1,1'-Binaphthyl-2,2'-diamine is the isomer of (S)-[1,1'-Binaphthalene]-2,2'-diamine (HY-W007978A), and can be used as an experimental control. (S)-[1,1'-Binaphthalene]-2,2'-diamine is a biochemical reagent that can be used as a biological material or organic compound for life science related research.

### REFERENCES

[1]. Kettle JG, et al. Discovery of AZD4625, a Covalent Allosteric Inhibitor of the Mutant GTPase KRASG12C. J Med Chem. 2022 May 12;65(9):6940-6952.

**Caution: Product has not been fully validated for medical applications. For research use only.**

Tel: 609-228-6898

Fax: 609-228-5909

E-mail: tech@MedChemExpress.com

Address: 1 Deer Park Dr, Suite Q, Monmouth Junction, NJ 08852, USA