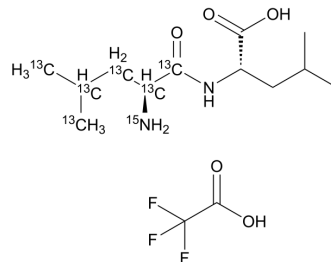


(Leu-¹³C₆, ¹⁵N)-Leu-OH

Cat. No.:	HY-W008642S
Molecular Formula:	C ₈ ¹³ C ₆ H _{12.5} F ₃ N ¹⁵ NO ₅
Molecular Weight:	365.3
Target:	Isotope-Labeled Compounds
Pathway:	Others
Storage:	Please store the product under the recommended conditions in the Certificate of Analysis.



BIOLOGICAL ACTIVITY

Description (Leu-13C6,15N)-Leu-OH TFA is a C13 and N15 labeled Leu-Leu-OH TFA. Leu-Leu-OH, a Leu derivative, is a dipeptide^[1].

REFERENCES

[1]. Russak EM, et al. Impact of Deuterium Substitution on the Pharmacokinetics of Pharmaceuticals. *Ann Pharmacother.* 2019;53(2):211-223.

Caution: Product has not been fully validated for medical applications. For research use only.

Tel: 609-228-6898

Fax: 609-228-5909

E-mail: tech@MedChemExpress.com

Address: 1 Deer Park Dr, Suite Q, Monmouth Junction, NJ 08852, USA