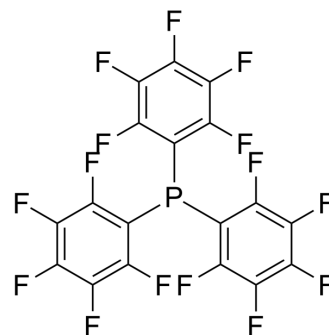


## Tris(pentafluorophenyl)phosphine

|                    |  |
|--------------------|--|
| Cat. No.:          | HY-W008896   |
| CAS No.:           | 1259-35-4  |
| Molecular Formula: | C <sub>18</sub> F <sub>15</sub> P  |
| Molecular Weight:  | 532.15   |
| Target:            | Biochemical Assay Reagents   |
| Pathway:           | Others   |
| Storage:           | 4°C, stored under nitrogen<br>* In solvent : -80°C, 6 months; -20°C, 1 month (stored under nitrogen) |



### BIOLOGICAL ACTIVITY

|                    |  |
|--------------------|--|
| <b>Description</b> | Tris(perfluorophenyl)phosphine is a biochemical reagent that can be used as a biological material or organic compound for life science related research.   |
| <b>In Vitro</b>    | Tris(pentafluorophenyl)phosphine is an additive for high voltage batteries. It acts as building blocks, coupling reagents, derivatizing reagents.<br>MCE has not independently confirmed the accuracy of these methods. They are for reference only. |

**Caution: Product has not been fully validated for medical applications. For research use only.**

Tel: 609-228-6898

Fax: 609-228-5909

E-mail: tech@MedChemExpress.com

Address: 1 Deer Park Dr, Suite Q, Monmouth Junction, NJ 08852, USA