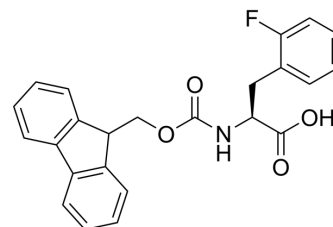


## Fmoc-Phe(2-F)-OH

Cat. No.:	HY-W008999
CAS No.:	205526-26-7
Molecular Formula:	C <sub>24</sub> H <sub>20</sub> FNO <sub>4</sub>
Molecular Weight:	405.42
Target:	Amino Acid Derivatives
Pathway:	Others
Storage:	<div>Powder</div> <div>-20°C 3 years</div> <div>4°C 2 years</div> <div>In solvent</div> <div>-80°C 6 months</div> <div>-20°C 1 month</div>



### SOLVENT & SOLUBILITY

In Vitro	DMSO : 100 mg/mL (246.66 mM; Need ultrasonic)					
	Preparing Stock Solutions	<div><div>Solvent</div><div>Concentration</div></div>	Mass	1 mg	5 mg	10 mg
		1 mM		2.4666 mL	12.3329 mL	24.6658 mL
		5 mM		0.4933 mL	2.4666 mL	4.9332 mL
		10 mM		0.2467 mL	1.2333 mL	2.4666 mL
Please refer to the solubility information to select the appropriate solvent.						
In Vivo	1. Add each solvent one by one: 10% DMSO >> 40% PEG300 >> 5% Tween-80 >> 45% saline Solubility: ≥ 2.5 mg/mL (6.17 mM); Clear solution					
	2. Add each solvent one by one: 10% DMSO >> 90% (20% SBE-β-CD in saline) Solubility: ≥ 2.5 mg/mL (6.17 mM); Clear solution					
	3. Add each solvent one by one: 10% DMSO >> 90% corn oil Solubility: ≥ 2.5 mg/mL (6.17 mM); Clear solution					

### BIOLOGICAL ACTIVITY

Description	Fmoc-Phe(2-F)-OH is a phenylalanine derivative <sup>[1]</sup> .
In Vitro	<p>Amino acids and amino acid derivatives have been commercially used as ergogenic supplements. They influence the secretion of anabolic hormones, supply of fuel during exercise, mental performance during stress related tasks and prevent exercise induced muscle damage. They are recognized to be beneficial as ergogenic dietary substances<sup>[1]</sup>.</p> <p>MCE has not independently confirmed the accuracy of these methods. They are for reference only.</p>

---

## REFERENCES

---

[1]. Luckose F, et al. Effects of amino acid derivatives on physical, mental, and physiological activities. Crit Rev Food Sci Nutr. 2015;55(13):1793-953.

---

**Caution: Product has not been fully validated for medical applications. For research use only.**

Tel: 609-228-6898

Fax: 609-228-5909

E-mail: [tech@MedChemExpress.com](mailto:tech@MedChemExpress.com)

Address: 1 Deer Park Dr, Suite Q, Monmouth Junction, NJ 08852, USA