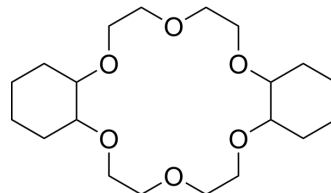


Dicyclohexano-18-crown-6-ether

Cat. No.:	HY-W009048
CAS No.:	16069-36-6
Molecular Formula:	C ₂₀ H ₃₆ O ₆
Molecular Weight:	372.5
Target:	Biochemical Assay Reagents
Pathway:	Others
Storage:	Please store the product under the recommended conditions in the Certificate of Analysis.



BIOLOGICAL ACTIVITY

Description

Dicyclohexano-18-crown-6-ether selectively extracts lysine-rich cytochrome c proteins from other cationic proteins under weakly acidic and neutral conditions, demonstrating specificity in ligand-protein interactions^[1].

REFERENCES

[1]. Oshima T, et al. Extraction and separation of a lysine-rich protein by formation of supramolecule between crown ether and protein in aqueous two-phase system. Anal Chim Acta. 2010 Aug 3;674(2):211-9.

Caution: Product has not been fully validated for medical applications. For research use only.

Tel: 609-228-6898

Fax: 609-228-5909

E-mail: tech@MedChemExpress.com

Address: 1 Deer Park Dr, Suite Q, Monmouth Junction, NJ 08852, USA