

## N-Desmethyloanzapine

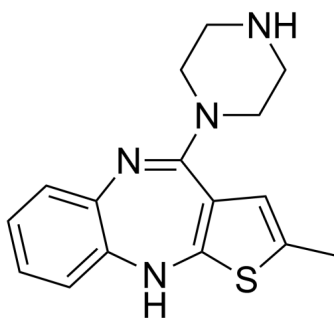
---

Cat. No.: HY-W009247  
Batch No.: 351012  
CAS No.: 161696-76-0  
Molecular Formula: C<sub>16</sub>H<sub>18</sub>N<sub>4</sub>S

### ANALYTICAL DATA

Theoretical: C(62.44%), H(6.00%), N(17.83%)  
Result: C(64.40%), H(6.08%), N(18.78%)

Chemical Structure:



**Caution: Product has not been fully validated for medical applications. For research use only.**

Tel: 609-228-6898

Fax: 609-228-5909

E-mail: [tech@MedChemExpress.com](mailto:tech@MedChemExpress.com)

Address: 1 Deer Park Dr, Suite Q, Monmouth Junction, NJ 08852, USA