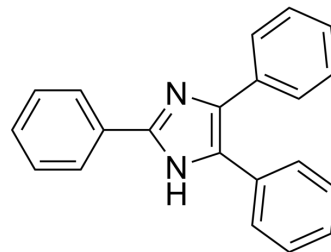


## Lophine

Cat. No.:	HY-W009253
CAS No.:	484-47-9
Molecular Formula:	C <sub>21</sub> H <sub>16</sub> N <sub>2</sub>
Molecular Weight:	296.37
Target:	Fluorescent Dye
Pathway:	Others
Storage:	Please store the product under the recommended conditions in the Certificate of Analysis.



### BIOLOGICAL ACTIVITY

#### Description

Lophine is a traditional chemiluminescent and fluorescent probe. Lophine and its derivatives are widely applied for reactive oxygen species (ROS) detection<sup>[1]</sup>.

### REFERENCES

[1]. Pavlova E, et al. Synthesis and physicochemical properties of novel lophine derivatives as chemiluminescent in vitro activators for detection of free radicals. Eur Biophys J. 2015 Dec;44(8):623-34.

**Caution: Product has not been fully validated for medical applications. For research use only.**

Tel: 609-228-6898

Fax: 609-228-5909

E-mail: tech@MedChemExpress.com

Address: 1 Deer Park Dr, Suite Q, Monmouth Junction, NJ 08852, USA