

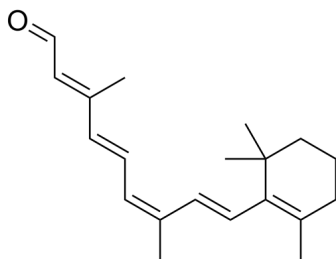
9-cis-Retinal

Cat. No.: HY-W009310
Batch No.: 153083
CAS No.: 514-85-2
Molecular Formula: C₂₀H₂₈O

ANALYTICAL DATA

Theoretical: C(84.45%), H(9.92%), N(-)
Result: C(83.89%), H(9.44%), N(-)

Chemical Structure:



Caution: Product has not been fully validated for medical applications. For research use only.

Tel: 609-228-6898

Fax: 609-228-5909

E-mail: tech@MedChemExpress.com

Address: 1 Deer Park Dr, Suite Q, Monmouth Junction, NJ 08852, USA