

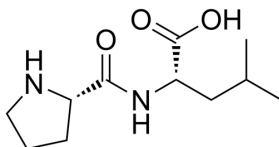
## L-Prolyl-L-leucine

Cat. No.: HY-W009686  
CAS No.: 52899-07-7  
Batch No.: 374661

### PHYSICAL AND CHEMICAL PROPERTIES

Molecular Formula:  $C_{11}H_{20}N_2O_3$   
Molecular Weight: 228.29  
Storage: -20°C, sealed storage, away from moisture  
\* In solvent : -80°C, 6 months; -20°C, 1 month (sealed storage, away from moisture)

### Chemical Structure:



### ANALYTICAL DATA

Appearance: White to off-white (Solid)  
<sup>1</sup>H NMR Spectrum: Consistent with structure  
LCMS: Consistent with structure  
Purity (LCMS): 99.86%  
Conclusion: The product has been tested and complies with the given specifications.

**Caution: Product has not been fully validated for medical applications. For research use only.**

Tel: 609-228-6898      Fax: 609-228-5909      E-mail: tech@MedChemExpress.com  
Address: 1 Deer Park Dr, Suite Q, Monmouth Junction, NJ 08852, USA