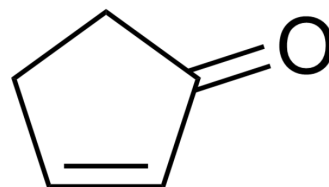


## 2-Cyclopentenone

Cat. No.:	HY-W010643		
CAS No.:	930-30-3		
Molecular Formula:	C <sub>5</sub> H <sub>6</sub> O		
Molecular Weight:	82.1		
Target:	Biochemical Assay Reagents		
Pathway:	Others		
Storage:	Pure form	-20°C	3 years
		4°C	2 years
	In solvent	-80°C	6 months
		-20°C	1 month



### SOLVENT & SOLUBILITY

#### In Vitro

DMSO : 100 mg/mL (1218.03 mM; Need ultrasonic)

	Solvent Concentration	Mass	1 mg	5 mg	10 mg
Preparing Stock Solutions	1 mM		12.1803 mL	60.9013 mL	121.8027 mL
	5 mM		2.4361 mL	12.1803 mL	24.3605 mL
	10 mM		1.2180 mL	6.0901 mL	12.1803 mL

Please refer to the solubility information to select the appropriate solvent.

#### In Vivo

1. Add each solvent one by one: 10% DMSO >> 40% PEG300 >> 5% Tween-80 >> 45% saline  
Solubility: ≥ 2.5 mg/mL (30.45 mM); Clear solution
2. Add each solvent one by one: 10% DMSO >> 90% (20% SBE-β-CD in saline)  
Solubility: ≥ 2.5 mg/mL (30.45 mM); Clear solution
3. Add each solvent one by one: 10% DMSO >> 90% corn oil  
Solubility: ≥ 2.5 mg/mL (30.45 mM); Clear solution

### BIOLOGICAL ACTIVITY

#### Description

Cyclopent-2-enone is a biochemical reagent that can be used as a biological material or organic compound for life science related research.

---

**Caution: Product has not been fully validated for medical applications. For research use only.**

Tel: 609-228-6898

Fax: 609-228-5909

E-mail: [tech@MedChemExpress.com](mailto:tech@MedChemExpress.com)

Address: 1 Deer Park Dr, Suite Q, Monmouth Junction, NJ 08852, USA