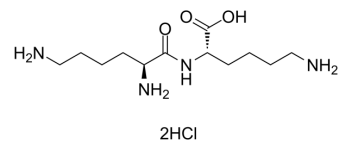


L-Lysyl-L-lysine dihydrochloride

Cat. No.:	HY-W011165
CAS No.:	52123-30-5
Molecular Formula:	C ₁₂ H ₂₈ Cl ₂ N ₄ O ₃
Molecular Weight:	347.28
Target:	Others
Pathway:	Others
Storage:	4°C, protect from light, stored under nitrogen * In solvent : -80°C, 6 months; -20°C, 1 month (protect from light, stored under nitrogen)



SOLVENT & SOLUBILITY

In Vitro

H₂O : ≥ 100 mg/mL (287.95 mM)
* "≥" means soluble, but saturation unknown.

Preparing Stock Solutions	Solvent Concentration	Mass		
		1 mg	5 mg	10 mg
	1 mM	2.8795 mL	14.3976 mL	28.7952 mL
	5 mM	0.5759 mL	2.8795 mL	5.7590 mL
	10 mM	0.2880 mL	1.4398 mL	2.8795 mL

Please refer to the solubility information to select the appropriate solvent.

BIOLOGICAL ACTIVITY

Description

L-Lysyl-L-lysine (Lysyllysine) dihydrochloride is an enzyme cleavable basic amino acid. L-Lysyl-L-lysine dihydrochloride can be used for delivering multiple biologically active peptides^[1].

REFERENCES

[1]. Sudhanand Prasad, et al. Delivering multiple anticancer peptides as a single prodrug using lysyl-lysine as a facile linker. J Pept Sci. 2007 Jul;13(7):458-67.

Caution: Product has not been fully validated for medical applications. For research use only.

Tel: 609-228-6898

Fax: 609-228-5909

E-mail: tech@MedChemExpress.com

Address: 1 Deer Park Dr, Suite Q, Monmouth Junction, NJ 08852, USA