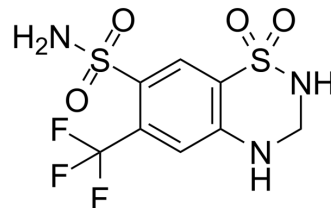


Hydroflumethiazide

Cat. No.:	HY-W011240		
CAS No.:	135-09-1		
Molecular Formula:	C ₈ H ₈ F ₃ N ₃ O ₄ S ₂		
Molecular Weight:	331.28		
Target:	Others		
Pathway:	Others		
Storage:	Powder	-20°C	3 years
		4°C	2 years
	In solvent	-80°C	6 months
		-20°C	1 month



SOLVENT & SOLUBILITY

In Vitro

DMSO : 125 mg/mL (377.32 mM; Need ultrasonic)

Concentration	Solvent	Mass		
		1 mg	5 mg	10 mg
Preparing Stock Solutions	1 mM	3.0186 mL	15.0930 mL	30.1859 mL
	5 mM	0.6037 mL	3.0186 mL	6.0372 mL
	10 mM	0.3019 mL	1.5093 mL	3.0186 mL

Please refer to the solubility information to select the appropriate solvent.

BIOLOGICAL ACTIVITY

Description

Hydroflumethiazide (Methforylthiazidine) is an orally active and potent thiazide diuretic. Hydroflumethiazide possesses the ability to directly stimulate A cell secretion in the normal and alloxan diabetic pancreas^{[1][2][3]}.

REFERENCES

- [1]. Selvaag E, et al. Phototoxicity to sulphonamide derived oral antidiabetics and diuretics. Comparative in vitro and in vivo investigations. *In Vivo*. 1997 Jan-Feb;11(1):103-7.
- [2]. Brørs O, et al. Pharmacokinetics of a single oral dose of hydroflumethiazide in health and in cardiac failure.-. *Eur J Clin Pharmacol*. 1978 Nov 9;14(1):29-37.
- [3]. Hermansen K, et al. Effects of a thiazide diuretic (hydroflumethiazide) and a loop diuretic (bumetanide) on the endocrine pancreas: studies in vitro. *Metabolism*. 1985 Aug;34(8):784-9.

Caution: Product has not been fully validated for medical applications. For research use only.

Tel: 609-228-6898

Fax: 609-228-5909

E-mail: tech@MedChemExpress.com

Address: 1 Deer Park Dr, Suite Q, Monmouth Junction, NJ 08852, USA