

File ..\DATA\2020\20200610\990\BIZ2020-610-SCH15.D Tgt Mass (CHM):

Injection Date : 11 Jun 20 5:31 pm +0800 Seq. Line : 111

Sample Name : BIZ2020-610-SCH15 Location : P1-D-09

Acq. Operator : ZJ_1432 Inj : 1

Spec. Reported : MS Integration Inj Volume : 1 ul

Acq. Method : D:\Chem32\1\data\2020\20200610\990\1-POS-3MIN.M

Analysis Method : D:\CHEM32\1\DATA\2020\20200610\990\1-POS-3MIN.M

Catalog No : HY-W011651

Method Info : Mobile Phase: A: water(0.01%TFA) B:ACN(0.01%TFA)

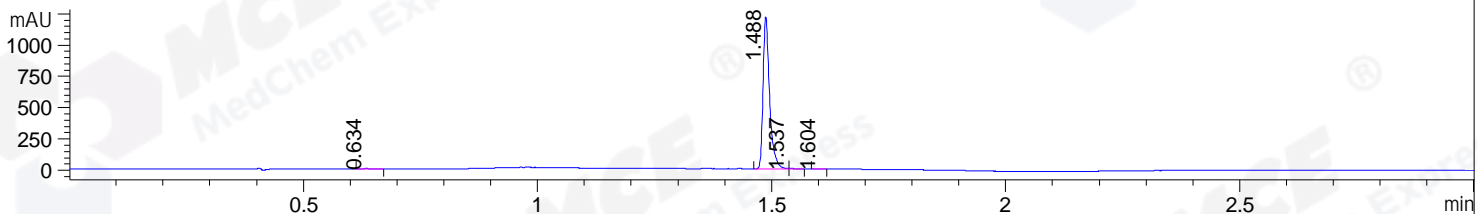
Gradient: 5% to 95%B within 1.3 min

Flow Rate :1.8ml/min

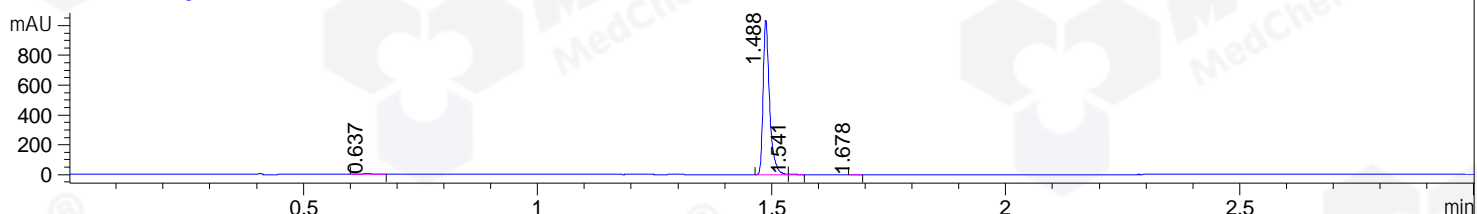
Column :SunFire C18, 4.6*50mm,3.5um A-RP-607

Oven Temperature : 45□

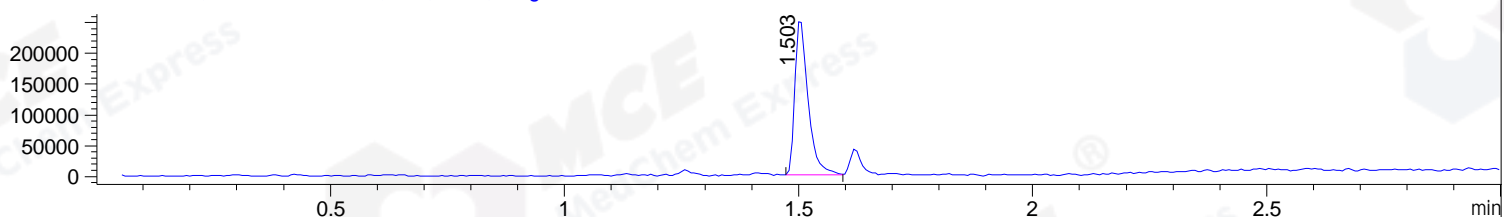
DAD1 B, Sig=214,4 Ref=off



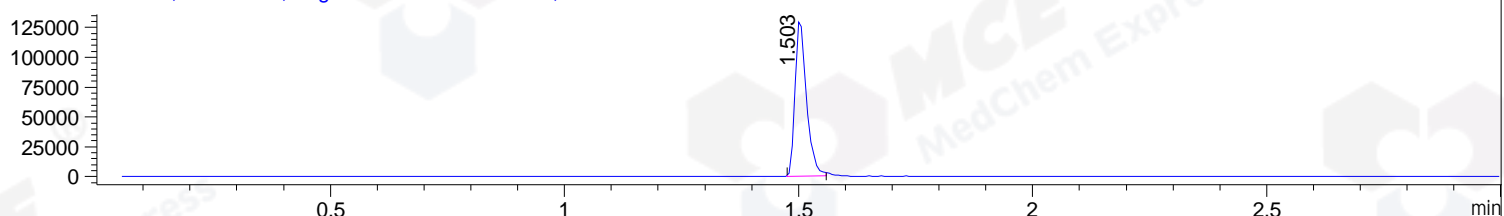
DAD1 C, Sig=254,4 Ref=off



MSD1 TIC, MS File ES-API, Pos, Scan, Frag: 70



Ion 272, MSD1 272, Target Mass 271 +H Positive, EIC=271.7:272.7



Integration Results for DAD1 B, Sig=214,4 Ref=off

RetTim	Width	Area	Height	Area%	MS (+)
0.63	0.02	4.11	2.81	0.35	ND
1.49	0.02	1175.65	1216.92	99.33	272
1.54	0.01	3.04	3.42	0.26	272
1.60	0.01	0.77	1.49	0.07	173

Integration Results for DAD1 C, Sig=254,4 Ref=off

RetTim	Width	Area	Height	Area%	MS (+)
0.64	0.03	8.09	4.64	0.81	ND
1.49	0.02	992.21	1037.64	98.79	272
1.54	0.01	3.28	3.90	0.33	272
1.68	0.01	0.83	0.99	0.08	ND

Integration Results for MSD1 TIC, MS File

RetTim	Width	Area	Height	Area%	MS (+)
1.50	0.03	497221.88	258622.81	100.00	272

Ret. Time: 1.50

<<<< POSITIVE SPECTRA >>>>

ES-API Positive

