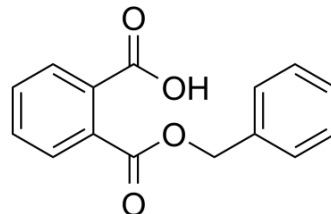


## Monobenzyl phthalate

<b>Cat. No.:</b>	HY-W011848		
<b>CAS No.:</b>	2528-16-7		
<b>Molecular Formula:</b>	C <sub>15</sub> H <sub>12</sub> O <sub>4</sub>		
<b>Molecular Weight:</b>	256.25		
<b>Target:</b>	Endogenous Metabolite		
<b>Pathway:</b>	Metabolic Enzyme/Protease		
<b>Storage:</b>	Powder	-20°C	3 years
		4°C	2 years
	In solvent	-80°C	6 months
		-20°C	1 month



### SOLVENT & SOLUBILITY

#### In Vitro

DMSO : 100 mg/mL (390.24 mM; Need ultrasonic)  
 H<sub>2</sub>O : < 0.1 mg/mL (insoluble)

Preparing Stock Solutions	Solvent Concentration	Mass		
		1 mg	5 mg	10 mg
	1 mM	3.9024 mL	19.5122 mL	39.0244 mL
	5 mM	0.7805 mL	3.9024 mL	7.8049 mL
	10 mM	0.3902 mL	1.9512 mL	3.9024 mL

Please refer to the solubility information to select the appropriate solvent.

#### In Vivo

- Add each solvent one by one: 10% DMSO >> 40% PEG300 >> 5% Tween-80 >> 45% saline  
 Solubility: ≥ 2.5 mg/mL (9.76 mM); Clear solution
- Add each solvent one by one: 10% DMSO >> 90% (20% SBE-β-CD in saline)  
 Solubility: ≥ 2.5 mg/mL (9.76 mM); Clear solution
- Add each solvent one by one: 10% DMSO >> 90% corn oil  
 Solubility: ≥ 2.5 mg/mL (9.76 mM); Clear solution

### BIOLOGICAL ACTIVITY

#### Description

Monobenzyl phthalate (2-((Benzyloxy)carbonyl)benzoic acid) is the urinary metabolite exposing to phthalates, such as, diethylhexyl phthalate (DEHP)<sup>[1]</sup>.

### REFERENCES

**Caution: Product has not been fully validated for medical applications. For research use only.**

Tel: 609-228-6898

Fax: 609-228-5909

E-mail: [tech@MedChemExpress.com](mailto:tech@MedChemExpress.com)

Address: 1 Deer Park Dr, Suite Q, Monmouth Junction, NJ 08852, USA