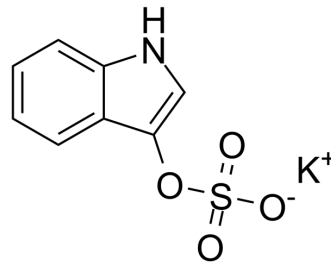


Potassium 1H-indol-3-yl sulfate

Cat. No.:	HY-W011910		
CAS No.:	2642-37-7		
Molecular Formula:	C ₈ H ₆ KNO ₄ S		
Molecular Weight:	251.3		
Target:	Endogenous Metabolite		
Pathway:	Metabolic Enzyme/Protease		
Storage:	Powder	-20°C	3 years
	In solvent	-80°C	6 months
		-20°C	1 month



SOLVENT & SOLUBILITY

In Vitro

DMSO : 100 mg/mL (397.93 mM; Need ultrasonic)
 H₂O : 50 mg/mL (198.97 mM; ultrasonic and warming and heat to 60°C)

Preparing Stock Solutions	Solvent Concentration	Mass		
		1 mg	5 mg	10 mg
	1 mM	3.9793 mL	19.8965 mL	39.7931 mL
	5 mM	0.7959 mL	3.9793 mL	7.9586 mL
	10 mM	0.3979 mL	1.9897 mL	3.9793 mL

Please refer to the solubility information to select the appropriate solvent.

In Vivo

- Add each solvent one by one: PBS
Solubility: 25 mg/mL (99.48 mM); Clear solution; Need ultrasonic
- Add each solvent one by one: 10% DMSO >> 40% PEG300 >> 5% Tween-80 >> 45% saline
Solubility: ≥ 2.5 mg/mL (9.95 mM); Clear solution
- Add each solvent one by one: 10% DMSO >> 90% (20% SBE-β-CD in saline)
Solubility: ≥ 2.5 mg/mL (9.95 mM); Clear solution
- Add each solvent one by one: 10% DMSO >> 90% corn oil
Solubility: ≥ 2.5 mg/mL (9.95 mM); Clear solution

BIOLOGICAL ACTIVITY

Description

Potassium 1H-indol-3-yl sulfate is an endogenous metabolite.

Caution: Product has not been fully validated for medical applications. For research use only.

Tel: 609-228-6898

Fax: 609-228-5909

E-mail: tech@MedChemExpress.com

Address: 1 Deer Park Dr, Suite Q, Monmouth Junction, NJ 08852, USA