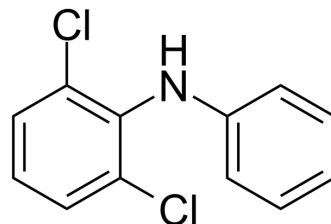


## 2,6-Dichlorodiphenylamine

Cat. No.:	HY-W012126
CAS No.:	15307-93-4
Molecular Formula:	C <sub>12</sub> H <sub>9</sub> Cl <sub>2</sub> N
Molecular Weight:	238.11
Target:	Bacterial
Pathway:	Anti-infection
Storage:	4°C, protect from light * In solvent : -80°C, 6 months; -20°C, 1 month (protect from light)



### SOLVENT & SOLUBILITY

In Vitro	DMSO : 100 mg/mL (419.97 mM; Need ultrasonic)				
		Solvent Concentration	Mass 1 mg	5 mg	10 mg
	Preparing Stock Solutions	1 mM	4.1997 mL	20.9987 mL	41.9974 mL
		5 mM	0.8399 mL	4.1997 mL	8.3995 mL
		10 mM	0.4200 mL	2.0999 mL	4.1997 mL
Please refer to the solubility information to select the appropriate solvent.					
In Vivo	1. Add each solvent one by one: 10% DMSO >> 40% PEG300 >> 5% Tween-80 >> 45% saline Solubility: 2.5 mg/mL (10.50 mM); Suspended solution; Need ultrasonic				
	2. Add each solvent one by one: 10% DMSO >> 90% corn oil Solubility: ≥ 2.5 mg/mL (10.50 mM); Clear solution				

### BIOLOGICAL ACTIVITY

Description	2,6-Dichlorodiphenylamine is an analogue of Diclofenac Sodium (HY-15037) and has anti-Candida albicans activity. Diclofenac Sodium is a potent and nonselective anti-inflammatory agent, acts as a COX inhibitor, with IC <sub>50</sub> s of 4 and 1.3 nM for human COX-1 and COX-2 in CHO cells.
-------------	---------------------------------------------------------------------------------------------------------------------------------------------------------------------------------------------------------------------------------------------------------------------------------------------------

### REFERENCES

[1]. Makoto Urai, et al. Potent Drugs That Attenuate anti-Candida Albicans Activity of Fluconazole and Their Possible Mechanisms of Action. J Infect Chemother. 2014 Oct;20(10):612-5.

---

**Caution: Product has not been fully validated for medical applications. For research use only.**

Tel: 609-228-6898

Fax: 609-228-5909

E-mail: [tech@MedChemExpress.com](mailto:tech@MedChemExpress.com)

Address: 1 Deer Park Dr, Suite Q, Monmouth Junction, NJ 08852, USA