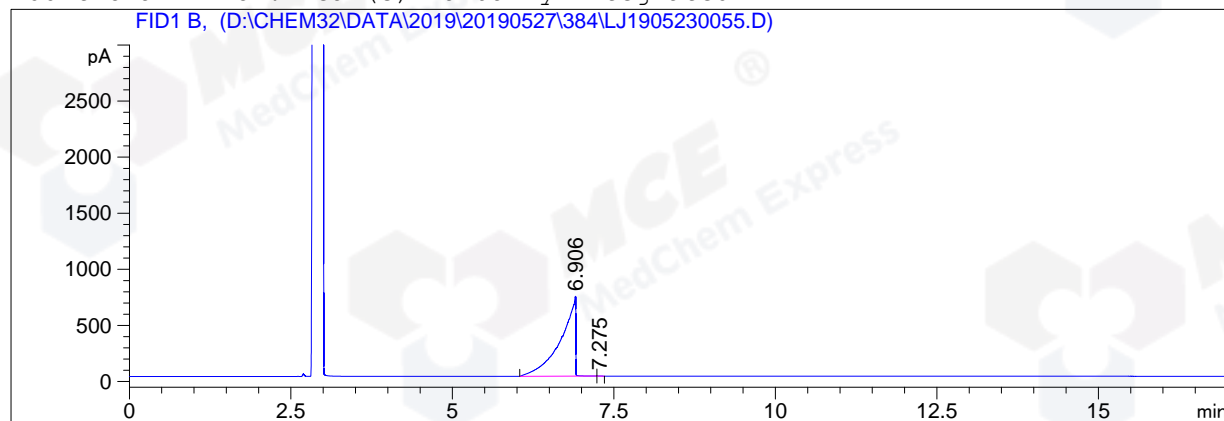


```
=====
Acq. Operator   : YSS_1194                      Seq. Line :   35
Acq. Instrument : GC-06                          Location  :   73 (B)
Injection Date  : 5/28/2019 9:57:33 AM           Inj       :    1
                                                    Inj Volume: 1 µl
Acq. Method     : D:\CHEM32\DATA\2019\20190527\384\GC-FQ.M
Last changed    : 5/27/2019 7:01:09 PM by YSS_1194
Analysis Method : D:\CHEM32\DATA\2019\20190527\384\GC-FQ.M (Sequence Method)
Last changed    : 5/28/2019 12:46:01 PM by YSS_1194
                (modified after loading)
Method Info     : test

Catalog No      : HY-W012999 Batch#45722 (BY ACN) HP-5 A-CP-43
=====
```

Additional Info : Peak(s) manually integrated



=====
Area Percent Report
=====

```
Sorted By       : Signal
Multiplier      : 1.0000
Dilution       : 1.0000
Do not use Multiplier & Dilution Factor with ISTDs
```

Signal 1: FID1 B,

Peak #	RetTime [min]	Type	Width [min]	Area [pA*s]	Height [pA]	Area %
1	6.906	BB	0.1926	1.12979e4	707.99713	99.97642
2	7.275	MM	0.0428	2.66508	1.03717	0.02358

Totals : 1.13005e4 709.03430

=====
*** End of Report ***