

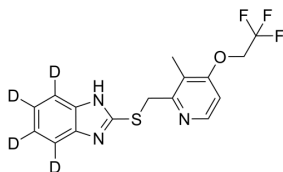
## Lansoprazole sulfide-d<sub>4</sub>

Cat. No.: HY-W013186S  
 CAS No.: 1216682-38-0  
 Batch No.: 233889  
 Chemical Name: 2-(((3-Methyl-4-(2,2,2-trifluoroethoxy)pyridin-2-yl)methyl)thio)-1H-benzo[d]imidazole-4,5,6,7-d<sub>4</sub>

### PHYSICAL AND CHEMICAL PROPERTIES

Molecular Formula: C<sub>16</sub>H<sub>10</sub>D<sub>4</sub>F<sub>3</sub>N<sub>3</sub>OS  
 Molecular Weight: 357.39  
 Storage: Powder -20°C 3 years  
 In solvent -80°C 6 months  
 -20°C 1 month

Chemical Structure:



### ANALYTICAL DATA

Appearance: White to off-white (Solid)  
<sup>1</sup>H NMR Spectrum: Consistent with structure  
 LCMS: Consistent with structure  
 Purity (LCMS): ≥99.0%  
 Conclusion: The product has been tested and complies with the given specifications.

**Caution: Product has not been fully validated for medical applications. For research use only.**

Tel: 609-228-6898

Fax: 609-228-5909

E-mail: tech@MedChemExpress.com

Address: 1 Deer Park Dr, Suite Q, Monmouth Junction, NJ 08852, USA