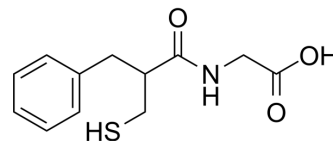


## Thiorphan

Cat. No.:	HY-W013375
CAS No.:	76721-89-6
Molecular Formula:	C <sub>12</sub> H <sub>15</sub> NO <sub>3</sub> S
Molecular Weight:	253.32
Target:	Nepilysin
Pathway:	Metabolic Enzyme/Protease
Storage:	-20°C, protect from light * In solvent : -80°C, 6 months; -20°C, 1 month (protect from light)



### SOLVENT & SOLUBILITY

In Vitro	DMSO : 250 mg/mL (986.89 mM; Need ultrasonic)				
		Solvent Concentration	Mass 1 mg	5 mg	10 mg
	Preparing Stock Solutions	1 mM	3.9476 mL	19.7379 mL	39.4758 mL
		5 mM	0.7895 mL	3.9476 mL	7.8952 mL
		10 mM	0.3948 mL	1.9738 mL	3.9476 mL
Please refer to the solubility information to select the appropriate solvent.					
In Vivo	1. Add each solvent one by one: 10% DMSO >> 40% PEG300 >> 5% Tween-80 >> 45% saline Solubility: ≥ 2.08 mg/mL (8.21 mM); Clear solution				
	2. Add each solvent one by one: 10% DMSO >> 90% (20% SBE-β-CD in saline) Solubility: ≥ 2.08 mg/mL (8.21 mM); Clear solution				
	3. Add each solvent one by one: 10% DMSO >> 90% corn oil Solubility: ≥ 2.08 mg/mL (8.21 mM); Clear solution				

### BIOLOGICAL ACTIVITY

Description	Thiorphan is a selective NEP (nepilysin) inhibitor with an IC <sub>50</sub> of 6.9 nM <sup>[1]</sup> .
-------------	--

### REFERENCES

[1]. Whyteside AR, Turner AJ. Human nepilysin-2 (NEP2) and NEP display distinct subcellular localisations and substrate preferences. FEBS Lett. 2008 Jul 9;582(16):2382-6.

---

**Caution: Product has not been fully validated for medical applications. For research use only.**

Tel: 609-228-6898

Fax: 609-228-5909

E-mail: [tech@MedChemExpress.com](mailto:tech@MedChemExpress.com)

Address: 1 Deer Park Dr, Suite Q, Monmouth Junction, NJ 08852, USA