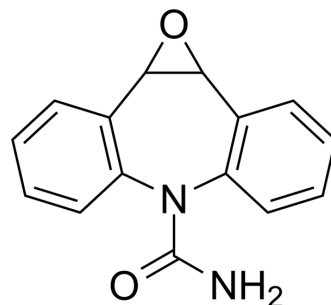


## Carbamazepine 10,11-epoxide

<b>Cat. No.:</b>	HY-W013378		
<b>CAS No.:</b>	36507-30-9		
<b>Molecular Formula:</b>	C <sub>15</sub> H <sub>12</sub> N <sub>2</sub> O <sub>2</sub>		
<b>Molecular Weight:</b>	252		
<b>Target:</b>	Endogenous Metabolite		
<b>Pathway:</b>	Metabolic Enzyme/Protease		
<b>Storage:</b>	Powder	-20°C	3 years
		4°C	2 years
	In solvent	-80°C	6 months
		-20°C	1 month



### SOLVENT & SOLUBILITY

#### In Vitro

DMSO : 125 mg/mL (496.03 mM; Need ultrasonic)

Concentration	Mass		
	1 mg	5 mg	10 mg
1 mM	3.9683 mL	19.8413 mL	39.6825 mL
5 mM	0.7937 mL	3.9683 mL	7.9365 mL
10 mM	0.3968 mL	1.9841 mL	3.9683 mL

Please refer to the solubility information to select the appropriate solvent.

### BIOLOGICAL ACTIVITY

#### Description

Carbamazepine 10,11-epoxide is an orally active metabolite of [Carbamazepine](#) (HY-B0246). Carbamazepine has anticonvulsant effect. Carbamazepine can be used for the research of seizures<sup>[1]</sup>.

### REFERENCES

[1]. T Tomson, et al. Single-dose kinetics and metabolism of carbamazepine-10,11-epoxide. Clin Pharmacol Ther. 1983 Jan;33(1):58-65.

**Caution: Product has not been fully validated for medical applications. For research use only.**

Tel: 609-228-6898

Fax: 609-228-5909

E-mail: tech@MedChemExpress.com

Address: 1 Deer Park Dr, Suite Q, Monmouth Junction, NJ 08852, USA