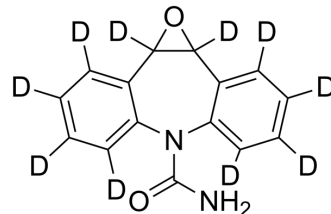


Carbamazepine 10,11 epoxide-d10

Cat. No.:	HY-W013378S1
CAS No.:	1219804-16-6
Molecular Formula:	C ₁₅ H ₂ D ₁₀ N ₂ O ₂
Molecular Weight:	262.33
Target:	Endogenous Metabolite
Pathway:	Metabolic Enzyme/Protease
Storage:	Powder -20°C 3 years 4°C 2 years In solvent -80°C 6 months -20°C 1 month



BIOLOGICAL ACTIVITY

Description	Carbamazepine 10,11 epoxide-d ₁₀ is the deuterium labeled Carbamazepine 10,11 epoxide[1].
In Vitro	Stable heavy isotopes of hydrogen, carbon, and other elements have been incorporated into drug molecules, largely as tracers for quantitation during the drug development process. Deuteration has gained attention because of its potential to affect the pharmacokinetic and metabolic profiles of drugs ^[1] . MCE has not independently confirmed the accuracy of these methods. They are for reference only.

REFERENCES

[1]. Russak EM, et al. Impact of Deuterium Substitution on the Pharmacokinetics of Pharmaceuticals. *Ann Pharmacother.* 2019;53(2):211-216.

Caution: Product has not been fully validated for medical applications. For research use only.

Tel: 609-228-6898

Fax: 609-228-5909

E-mail: tech@MedChemExpress.com

Address: 1 Deer Park Dr, Suite Q, Monmouth Junction, NJ 08852, USA