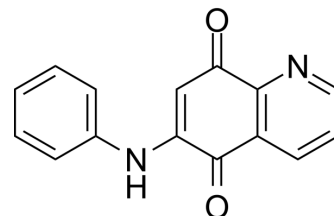


LY83583

Cat. No.:	HY-W013386
CAS No.:	91300-60-6
Molecular Formula:	C ₁₅ H ₁₀ N ₂ O ₂
Molecular Weight:	250.25
Target:	Guanylate Cyclase
Pathway:	GPCR/G Protein
Storage:	4°C, sealed storage, away from moisture and light * In solvent : -80°C, 6 months; -20°C, 1 month (sealed storage, away from moisture and light)



SOLVENT & SOLUBILITY

In Vitro	DMSO : 200 mg/mL (799.20 mM; Need ultrasonic)																			
Preparing Stock Solutions	<table border="1"> <thead> <tr> <th rowspan="2">Solvent Concentration</th> <th colspan="3">Mass</th> </tr> <tr> <th>1 mg</th> <th>5 mg</th> <th>10 mg</th> </tr> </thead> <tbody> <tr> <td>1 mM</td> <td>3.9960 mL</td> <td>19.9800 mL</td> <td>39.9600 mL</td> </tr> <tr> <td>5 mM</td> <td>0.7992 mL</td> <td>3.9960 mL</td> <td>7.9920 mL</td> </tr> <tr> <td>10 mM</td> <td>0.3996 mL</td> <td>1.9980 mL</td> <td>3.9960 mL</td> </tr> </tbody> </table>	Solvent Concentration	Mass			1 mg	5 mg	10 mg	1 mM	3.9960 mL	19.9800 mL	39.9600 mL	5 mM	0.7992 mL	3.9960 mL	7.9920 mL	10 mM	0.3996 mL	1.9980 mL	3.9960 mL
	Solvent Concentration		Mass																	
		1 mg	5 mg	10 mg																
	1 mM	3.9960 mL	19.9800 mL	39.9600 mL																
5 mM	0.7992 mL	3.9960 mL	7.9920 mL																	
10 mM	0.3996 mL	1.9980 mL	3.9960 mL																	
Please refer to the solubility information to select the appropriate solvent.																				
In Vivo	1. Add each solvent one by one: 10% DMSO >> 40% PEG300 >> 5% Tween-80 >> 45% saline Solubility: ≥ 2.5 mg/mL (9.99 mM); Clear solution																			

BIOLOGICAL ACTIVITY

Description	LY83583 is a cell-permeable and competitive inhibitor of soluble guanylate cyclase (sGC) with an IC ₅₀ value of 2 μM ^[1] .
--------------------	--

REFERENCES

[1]. Mülsch A, et al. LY 83583 (6-anilino-5,8-quinolinedione) blocks nitrovasodilator-induced cyclic GMP increases and inhibition of platelet activation. Naunyn Schmiedebergs Arch Pharmacol. 1989 Jul;340(1):119-25.

Caution: Product has not been fully validated for medical applications. For research use only.

Tel: 609-228-6898

Fax: 609-228-5909

E-mail: tech@MedChemExpress.com

Address: 1 Deer Park Dr, Suite Q, Monmouth Junction, NJ 08852, USA