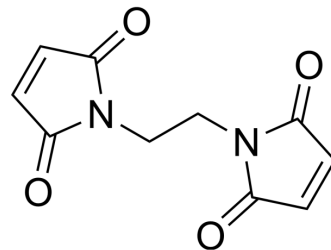


1,2-Bis(maleimido)ethane

Cat. No.:	HY-W013538
CAS No.:	5132-30-9
Molecular Formula:	C ₁₀ H ₈ N ₂ O ₄
Molecular Weight:	220.18
Target:	Others
Pathway:	Others
Storage:	Please store the product under the recommended conditions in the Certificate of Analysis.



BIOLOGICAL ACTIVITY

Description

1,2-Bis(maleimido)ethane (N,N'-Ethylenedimaleimide) is a protein cross-linking agent.

REFERENCES

[1]. A. Ashok Kumar, et al. Preparation and characterization of siliconized epoxy-1,2-bis(maleimido)ethane intercrosslinked matrix materials. J Appl Polym Sci 89: 3808–3817, 2003.

Caution: Product has not been fully validated for medical applications. For research use only.

Tel: 609-228-6898

Fax: 609-228-5909

E-mail: tech@MedChemExpress.com

Address: 1 Deer Park Dr, Suite Q, Monmouth Junction, NJ 08852, USA