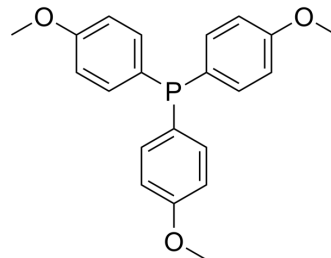


## Tris(4-methoxyphenyl)phosphine

Cat. No.:	HY-W013772
CAS No.:	855-38-9
Molecular Formula:	C <sub>21</sub> H <sub>21</sub> O <sub>3</sub> P
Molecular Weight:	352.36
Target:	Biochemical Assay Reagents
Pathway:	Others
Storage:	4°C, stored under nitrogen * In solvent : -80°C, 6 months; -20°C, 1 month (stored under nitrogen)



### BIOLOGICAL ACTIVITY

<b>Description</b>	Tris(4-methoxyphenyl)phosphine is a biochemical reagent that can be used as a biological material or organic compound for life science related research.
<b>In Vitro</b>	It is employed in Suzuki reaction. It is also used in the kinetic study of the effect of catalysts on the curing of biphenyl epoxy resin. MCE has not independently confirmed the accuracy of these methods. They are for reference only.

**Caution: Product has not been fully validated for medical applications. For research use only.**

Tel: 609-228-6898

Fax: 609-228-5909

E-mail: tech@MedChemExpress.com

Address: 1 Deer Park Dr, Suite Q, Monmouth Junction, NJ 08852, USA