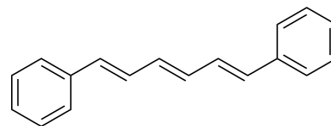


## 1,6-Diphenylhexa-1,3,5-triene

Cat. No.:	HY-W013967
CAS No.:	1720-32-7
Molecular Formula:	C <sub>18</sub> H <sub>16</sub>
Molecular Weight:	232.32
Target:	Fluorescent Dye
Pathway:	Others
Storage:	4°C, protect from light * In solvent : -80°C, 6 months; -20°C, 1 month (protect from light)



### SOLVENT & SOLUBILITY

#### In Vitro

DMSO : 14.29 mg/mL (61.51 mM; ultrasonic and warming and heat to 60°C)

Concentration	Solvent	Mass		
		1 mg	5 mg	10 mg
Preparing Stock Solutions	1 mM	4.3044 mL	21.5220 mL	43.0441 mL
	5 mM	0.8609 mL	4.3044 mL	8.6088 mL
	10 mM	0.4304 mL	2.1522 mL	4.3044 mL

Please refer to the solubility information to select the appropriate solvent.

### BIOLOGICAL ACTIVITY

#### Description

1,6-Diphenylhexa-1,3,5-triene is a fluorescent probe<sup>[1]</sup>.

### REFERENCES

[1]. H Y Yeh, et al. Characterization of lipopolysaccharide fractions and their interactions with cells and model membranes. J Bacteriol. 1992 Jan;174(1):336-41.

**Caution: Product has not been fully validated for medical applications. For research use only.**

Tel: 609-228-6898

Fax: 609-228-5909

E-mail: tech@MedChemExpress.com

Address: 1 Deer Park Dr, Suite Q, Monmouth Junction, NJ 08852, USA