

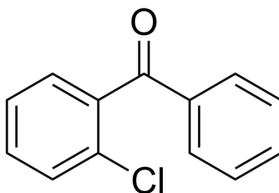
## (2-Chlorophenyl)(phenyl)methanone

Cat. No.: HY-W014114  
CAS No.: 5162-03-8  
Batch No.: 430118  
Chemical Name: Methanone, (2-chlorophenyl)phenyl-

### PHYSICAL AND CHEMICAL PROPERTIES

Molecular Formula: C<sub>13</sub>H<sub>9</sub>ClO  
Molecular Weight: 216.66  
Storage: Powder      -20°C    3 years  
                                  4°C      2 years  
                                  In solvent    -80°C    6 months  
  -20°C    1 month

Chemical Structure:



### ANALYTICAL DATA

Appearance: White to off-white (Solid)  
<sup>1</sup>H NMR Spectrum: Consistent with structure  
Purity (HPLC): 98.76%  
Water(KF): 0.15%  
Conclusion: The product has been tested and complies with the given specifications.

**Caution: Product has not been fully validated for medical applications. For research use only.**

Tel: 609-228-6898

Fax: 609-228-5909

E-mail: tech@MedChemExpress.com

Address: 1 Deer Park Dr, Suite Q, Monmouth Junction, NJ 08852, USA