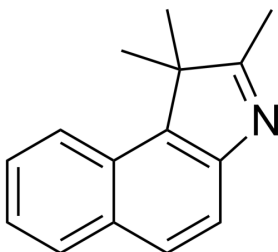


1,1,2-Trimethyl-1H-benz[e]indole

Cat. No.: HY-W014437
CAS No.: 41532-84-7
Batch No.: 231522
Chemical Name: 1H-Benz[e]indole, 1,1,2-trimethyl-

PHYSICAL AND CHEMICAL PROPERTIES

Molecular Formula: C₁₅H₁₅N
Molecular Weight: 209.29
Storage: Store at room temperature
Chemical Structure:



ANALYTICAL DATA

Appearance: Yellow to brown (Solid)
¹H NMR Spectrum: Consistent with structure
Purity (HPLC): 99.97%
Water(KF): 0.26%
Conclusion: The product has been tested and complies with the given specifications.

Caution: Product has not been fully validated for medical applications. For research use only.

Tel: 609-228-6898

Fax: 609-228-5909

E-mail: tech@MedChemExpress.com

Address: 1 Deer Park Dr, Suite Q, Monmouth Junction, NJ 08852, USA