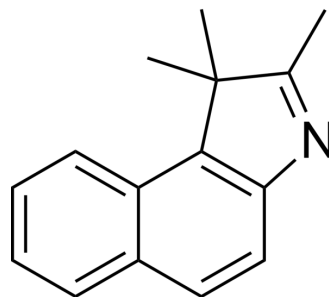


1,1,2-Trimethyl-1H-benz[e]indole

Cat. No.:	HY-W014437
CAS No.:	41532-84-7
Molecular Formula:	C ₁₅ H ₁₅ N
Molecular Weight:	209.29
Target:	Biochemical Assay Reagents
Pathway:	Others
Storage:	Please store the product under the recommended conditions in the Certificate of Analysis.



BIOLOGICAL ACTIVITY

Description	1,1,2-Trimethyl-1H-benzo[e]indole is a biochemical reagent that can be used as a biological material or organic compound for life science related research.
In Vitro	Reactant used for preparation of fluorescent probes for imaging of tumors in vivo, hypoxia-sensitive fluorescent probes for in vivo real-time imaging of acute ischemia and near IR fluorescent probe for imaging integrin receptor expression. MCE has not independently confirmed the accuracy of these methods. They are for reference only.

Caution: Product has not been fully validated for medical applications. For research use only.

Tel: 609-228-6898

Fax: 609-228-5909

E-mail: tech@MedChemExpress.com

Address: 1 Deer Park Dr, Suite Q, Monmouth Junction, NJ 08852, USA