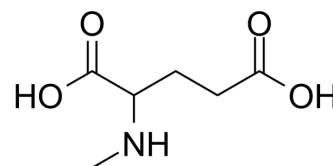


## N-Methyl-DL-glutamic acid

|                           |  |
|---------------------------|--|
| <b>Cat. No.:</b>          | HY-W015424   |
| <b>CAS No.:</b>           | 35989-16-3   |
| <b>Molecular Formula:</b> | C <sub>6</sub> H <sub>11</sub> NO <sub>4</sub>   |
| <b>Molecular Weight:</b>  | 161  |
| <b>Target:</b>            | Endogenous Metabolite  |
| <b>Pathway:</b>           | Metabolic Enzyme/Protease  |
| <b>Storage:</b>           | 4°C, sealed storage, away from moisture and light<br>* In solvent : -80°C, 6 months; -20°C, 1 month (sealed storage, away from moisture and light) |



### SOLVENT & SOLUBILITY

#### In Vitro

H<sub>2</sub>O : 62.5 mg/mL (388.20 mM; Need ultrasonic)

| Concentration             | Solvent | Mass      |            |            |
|---------------------------|---------|-----------|------------|------------|
|                           |         | 1 mg      | 5 mg       | 10 mg      |
| Preparing Stock Solutions | 1 mM    | 6.2112 mL | 31.0559 mL | 62.1118 mL |
|                           | 5 mM    | 1.2422 mL | 6.2112 mL  | 12.4224 mL |
|                           | 10 mM   | 0.6211 mL | 3.1056 mL  | 6.2112 mL  |

Please refer to the solubility information to select the appropriate solvent.

### BIOLOGICAL ACTIVITY

#### Description

N-Methyl-DL-glutamic acid is a L-Glutamic acid (HY-14608) analog with cytotoxic effects<sup>[1][2]</sup>.

### REFERENCES

- [1]. Olney JW, et al. Cytotoxic effects of acidic and sulphur containing amino acids on the infant mouse central nervous system. *Exp Brain Res.* 1971;14(1):61-76.
- [2]. Chan PH, et al. Effects of excitatory neurotransmitter amino acids on swelling of rat brain cortical slices. *J Neurochem.* 1979 Dec;33(6):1309-15.

**Caution: Product has not been fully validated for medical applications. For research use only.**

Tel: 609-228-6898

Fax: 609-228-5909

E-mail: tech@MedChemExpress.com

Address: 1 Deer Park Dr, Suite Q, Monmouth Junction, NJ 08852, USA