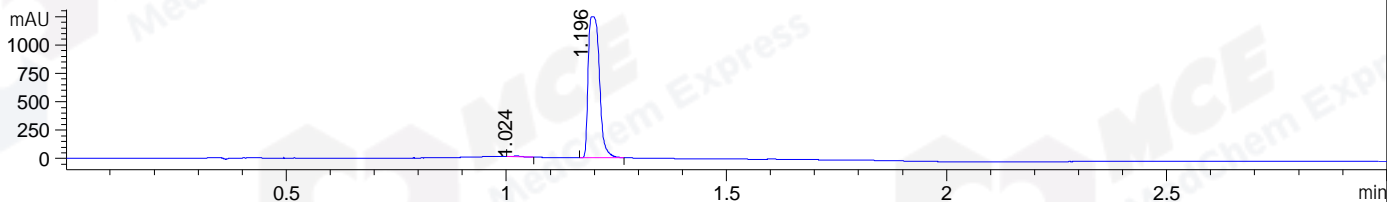
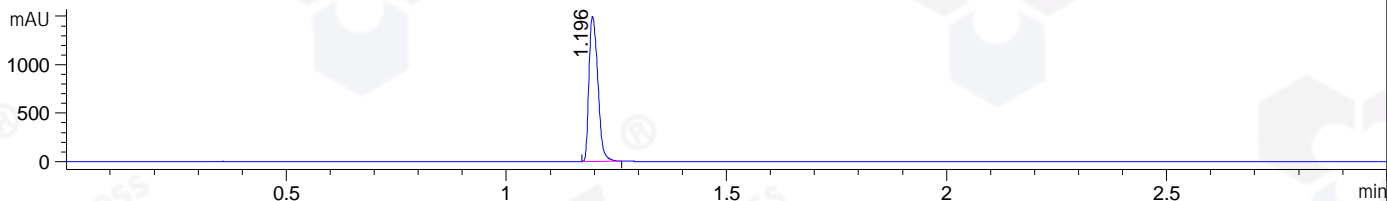


File ..M32\1\DATA\2019\20191101\751\LY1910310006.D Tgt Mass (CHM):
Injection Date : 1 Nov 19 2:02 pm +0800 Seq. Line : 45
Sample Name : LY1910310006 Location : P2-D-01
Acq. Operator : ZJ_1432 Inj : 1
Spec. Reported : MS Integration Inj Volume : 0.5 ul
Acq. Method : D:\Chem32\1\data\2019\20191101\751\1-POS-3MIN.M
Analysis Method : D:\CHEM32\1\DATA\2019\20191101\751\1-POS-3MIN.M
Catalog No : HY-W015445
Method Info : Mobile Phase: A: water(0.01%TFA) B:ACN(0.01%TFA)
Gradient: 5% to 95%B within 1.3 min
Flow Rate :1.8ml/min
Column :SunFire C18, 4.6*50mm,3.5um A-RP-433
Oven Temperature : 45

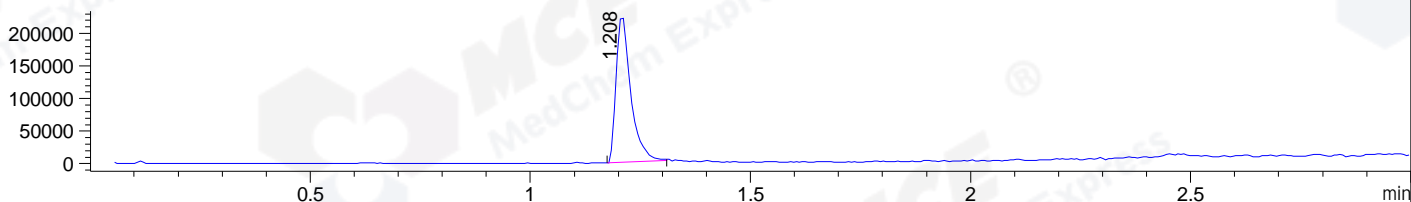
DAD1 B, Sig=214,4 Ref=off



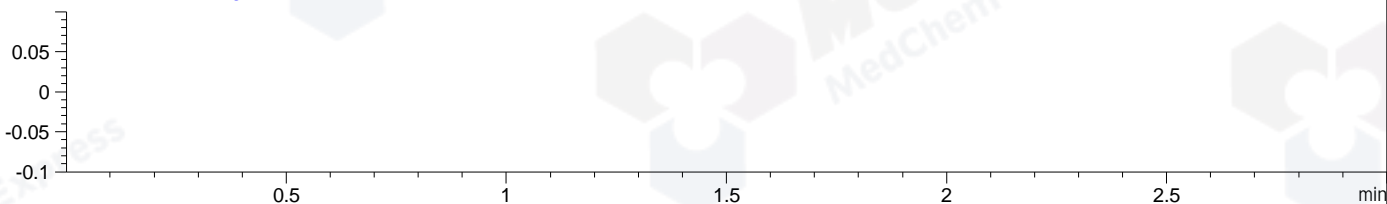
DAD1 C, Sig=254,4 Ref=off



MSD1 TIC, MS File ES-API, Pos, Scan, Frag: 70



Ion 1, MSD1 1, Target Mass 0 +H Positive, EIC=0.7:1.7



Integration Results for DAD1 B, Sig=214,4 Ref=off

RetTim	Width	Area	Height	Area%	MS (+)
1.02	0.02	12.25	8.33	0.56	ND
1.20	0.03	2192.32	1244.32	99.44	161

Integration Results for DAD1 C, Sig=254,4 Ref=off

RetTim	Width	Area	Height	Area%	MS (+)
1.20	0.02	2100.43	1497.94	100.00	161

Integration Results for MSD1 TIC, MS File

RetTim	Width	Area	Height	Area%	MS (+)
1.21	0.03	521354.69	225502.33	100.00	161

Ret. Time: 1.21

<<<< POSITIVE SPECTRA >>>>

ES-API Positive

