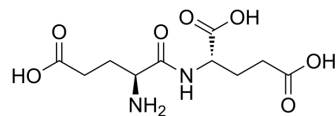


Glu-Glu

Cat. No.:	HY-W016012
CAS No.:	3929-61-1
Molecular Formula:	C ₁₀ H ₁₆ N ₂ O ₇
Molecular Weight:	276.24
Target:	Amino Acid Derivatives
Pathway:	Others
Storage:	Please store the product under the recommended conditions in the Certificate of Analysis.



BIOLOGICAL ACTIVITY

Description

Glu-Glu is a glutamic acid derivative containing amino and carboxyl groups. Glu-Glu is an analog of acidic tripeptide and can contribute to calcium absorption^{[1][2]}.

REFERENCES

[1]. Guo D, et, al. Duck Egg White-Derived Peptide VSEE (Val-Ser-Glu-Glu) Regulates Bone and Lipid Metabolisms by Wnt/ β -Catenin Signaling Pathway and Intestinal Microbiota. *Mol Nutr Food Res*. 2019 Dec;63(24):e1900525.

[2]. Tamura M, et, al. The Relationship between Taste and Primary Structure of "Delicious Peptide" (Lys-Gly-Asp-Glu-Glu-Ser-Leu-Ala t) from Beef Soup. *Agric. Bioi. Chem*. 1989 Jul 6;52(2):319-25.

Caution: Product has not been fully validated for medical applications. For research use only.

Tel: 609-228-6898

Fax: 609-228-5909

E-mail: tech@MedChemExpress.com

Address: 1 Deer Park Dr, Suite Q, Monmouth Junction, NJ 08852, USA