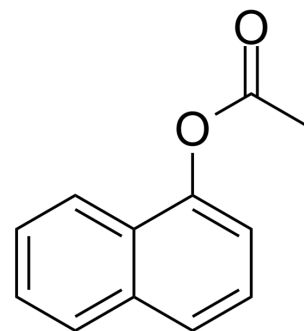


1-Naphthyl acetate

Cat. No.:	HY-W016188		
CAS No.:	830-81-9		
Molecular Formula:	C ₁₂ H ₁₀ O ₂		
Molecular Weight:	186.21		
Target:	AChE		
Pathway:	Neuronal Signaling		
Storage:	Powder	-20°C	3 years
		4°C	2 years
	In solvent	-80°C	6 months
		-20°C	1 month



SOLVENT & SOLUBILITY

In Vitro	DMSO : 100 mg/mL (537.03 mM; Need ultrasonic)				
		Solvent Concentration	Mass 1 mg	5 mg	10 mg
	Preparing Stock Solutions	1 mM	5.3703 mL	26.8514 mL	53.7028 mL
		5 mM	1.0741 mL	5.3703 mL	10.7406 mL
10 mM		0.5370 mL	2.6851 mL	5.3703 mL	
Please refer to the solubility information to select the appropriate solvent.					
In Vivo	<ol style="list-style-type: none"> Add each solvent one by one: 10% DMSO >> 40% PEG300 >> 5% Tween-80 >> 45% saline Solubility: ≥ 2.5 mg/mL (13.43 mM); Clear solution Add each solvent one by one: 10% DMSO >> 90% (20% SBE-β-CD in saline) Solubility: ≥ 2.5 mg/mL (13.43 mM); Clear solution Add each solvent one by one: 10% DMSO >> 90% corn oil Solubility: ≥ 2.5 mg/mL (13.43 mM); Clear solution 				

BIOLOGICAL ACTIVITY

Description	1-Naphthyl acetate is an attractive chromogenic substrate for the detection of erythrocyte acetylcholinesterase (AChE) activity. 1-Naphthyl acetate has the potential to detect organophosphorus pesticide (OP) poisoning ^[1] .
IC₅₀ & Target	AChE ^[1]

REFERENCES

Caution: Product has not been fully validated for medical applications. For research use only.

Tel: 609-228-6898

Fax: 609-228-5909

E-mail: tech@MedChemExpress.com

Address: 1 Deer Park Dr, Suite Q, Monmouth Junction, NJ 08852, USA